



anti- Phospho-CHEK1-S280 antibody

Product Information

Catalog No.:	FNab09816
Size:	100 μ g
Form:	liquid
Purification:	Immunogen affinity purified
Purity:	\geq 95% as determined by SDS-PAGE
Host:	Rabbit
IsoType:	IgG
Storage:	PBS with 0.02% sodium azide and 50% glycerol pH 7.3 , -20 $^{\circ}$ C for 24 months (Avoid repeated freeze / thaw cycles.)

Background

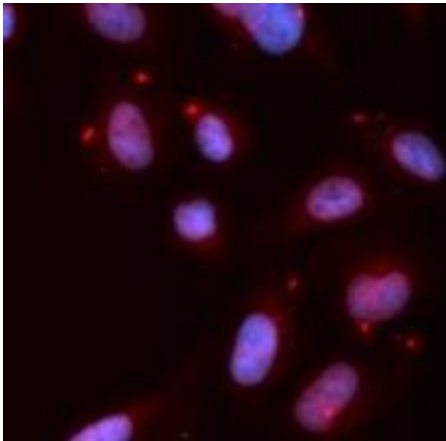
The protein encoded by this gene belongs to the Ser/Thr protein kinase family. It is required for checkpoint mediated cell cycle arrest in response to DNA damage or the presence of unreplicated DNA. This protein acts to integrate signals from ATM and ATR, two cell cycle proteins involved in DNA damage responses, that also associate with chromatin in meiotic prophase I. Phosphorylation of CDC25A protein phosphatase by this protein is required for cells to delay cell cycle progression in response to double-strand DNA breaks. Several alternatively spliced transcript variants have been found for this gene.

Immunogen information

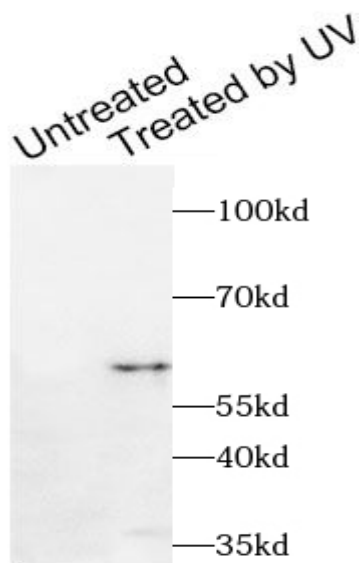
Immunogen:	Phospho-CHEK1-S280
Synonyms:	CHK1
Calculated MW:	60 kDa
Uniprot ID :	O14757

Application

Specificity:	Human, Mouse; other species are not tested. Please decide the specificity by homology
Tested Application:	ELISA, IHC, WB, IF
Recommended dilution:	WB: 1:500 - 1:2000; IHC: 1:50 - 1:200; IF: 1:50 - 1:200
Image:	



Immunofluorescence analysis of MCF-7 cells using FNab09816. Blue: DAPI for nuclear staining.



HT-29 cells were subjected to SDS PAGE followed by western blot with FNab09816 at dilution of 1:1000