

## anti-Vinculin antibody

### Product Information

Catalog No.:	FNab09800
Size:	100 $\mu$ g
Form:	liquid
Purification:	Protein A+G purification
Purity:	$\geq$ 95% as determined by SDS-PAGE
Host:	Mouse
IsoType:	IgG1
Storage:	PBS with 0.02% sodium azide and 50% glycerol pH 7.3 , -20 $^{\circ}$ C for 24 months (Avoid repeated freeze / thaw cycles.)

### Background

Vinculin belongs to the vinculin/alpha-catenin family. It is an actin filament (F-actin)-binding protein which involved in cell-matrix adhesion and cell-cell adhesion. Vinculin regulates cell-surface E-cadherin expression and potentiates mechanosensing by the E-cadherin complex. It may also play important roles in cell morphology and locomotion. Vinculin is a 117-kDa, 1,066-amino-acid protein which is ubiquitously expressed. Its splice variant, metavinculin (124 kDa), is muscle-specific.

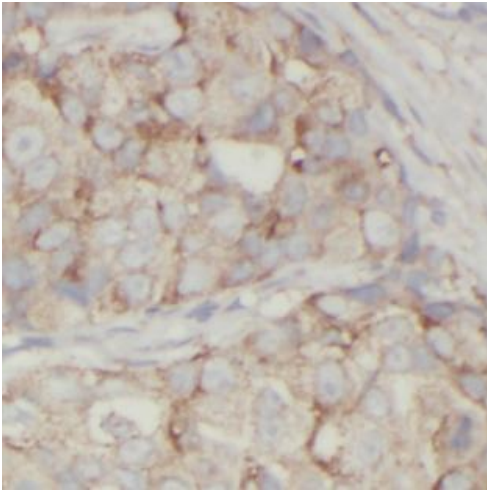
### Immunogen information

Immunogen:	vinculin
Synonyms:	CMD1W, Metavinculin, MVCL, VCL, Vinculin
Calculated MW:	124kd
UniprotID :	P18206

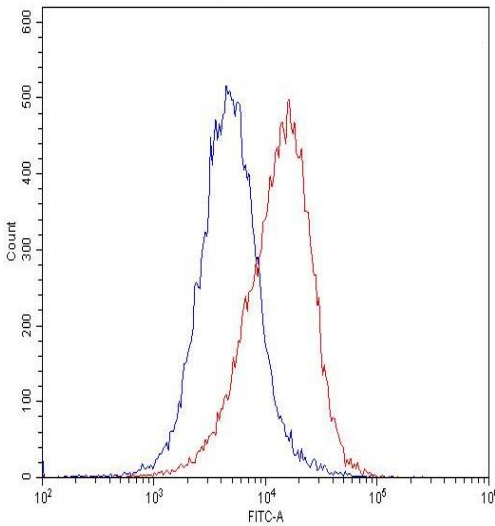
### Application

Specificity:	human, rat,mouse; other species are not tested. Please decide the specificity by homology
Tested Application:	ELISA, FC, IF, IHC, WB
Recommended dilution:	WB : 1:2000-1:20000 IHC : 1:50-1:500 IF : 1:50-1:500

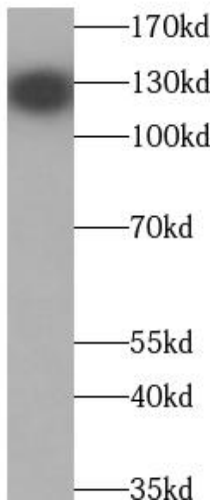
Image:



Immunohistochemistry of paraffin-embedded human breast cancer tissue slide using FNab09800( Vinculin Antibody) at dilution of 1:200



1X10<sup>6</sup> HeLa cells were stained with 0.2ug Vinculin antibody (FNab09800, red) and control antibody (blue). Fixed with 4% PFA blocked with 3% BSA (30 min). Alexa Fluor 488-conjugated Goat Anti-Mouse IgG(H+L) with dilution 1:1500.



hela lysates were subjected to SDS PAGE followed by western blot with FNab09800( Vinculin Antibody) at dilution of 1:5000