



FineTest®

Wuhan Fine Biotech Co., Ltd

About us

Fine Biotech Co., Ltd. Is an ISO9001 certified manufacturer who specializes in providing ELISA Kits, Antibodies, Recombinant Proteins and relevant Reagents for research use. With 1200m² GMP-standard department, advanced experimental equipment as well strict QC process, we provide to customers the stable quality product and reliable experimental data. FineTest's products has been widely used in life sciences research by global researches from over 50 countries, such as immunology, signal transduction, metabolism, neuroscience etc. More than 2400 papers citing FineTest products in international journals have helped global researchers conduct their bioassays.

Product Lines: ELISA Kits, Antibodies, Recombinant Proteins, Reagents(IHC assay kits, Cell function assay kits).....etc.

GMP Workshop:1200m² 10,000 Class Clean Areas

Support Team: 10 years R&D experience
1 PhD+8 master, quick response within 24 hours

Staffs: 110 employees ,over 80 work on R&D

Qualifications: ISO9001:2015, CE certification

Patents: 38 items

Citations: Over 3400 papers, total IF 12000



Qualifications



ISO 9001:2015



CE Certificate



Patent Certificate



3551 Optics Valley Talent Schema



3551 Optics Valley Talent



Optics Valley Gazelle

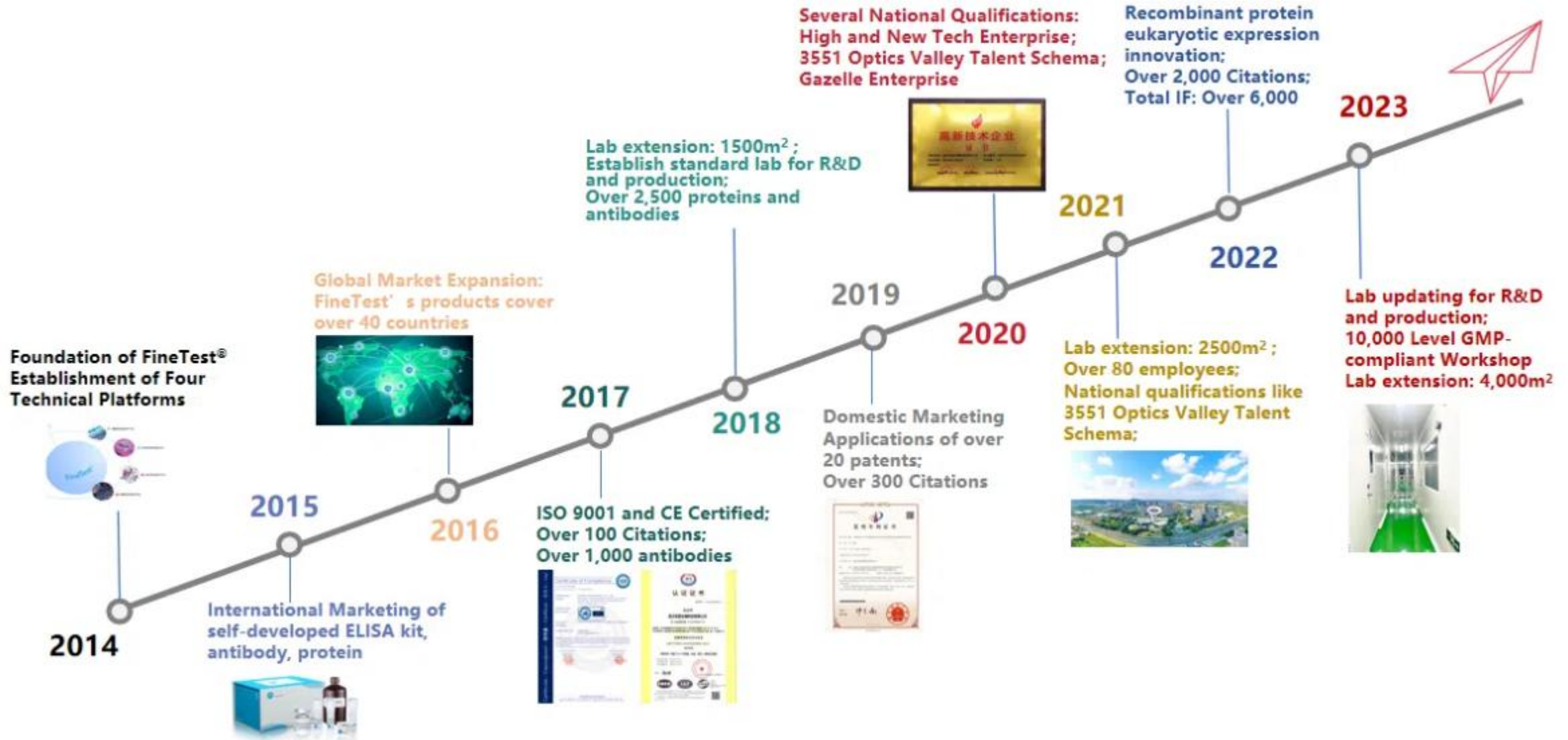


Technology Little Giant



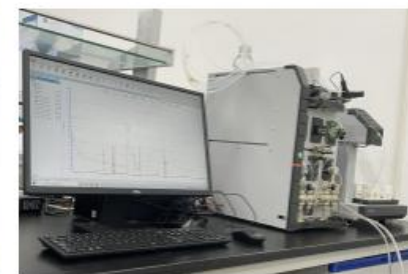
High-Tech Enterprises

History and Achievements



Company Show

GMP Workshop



Product Lines

ELISA Kits

Over 9,000 kits involving in Human, Mouse, Rat, Universal...Bovine, Chicken, Porcine 16 species

Main Products

Reagents

Cell function assay kit
DAB Substrate Kit, IHC kit
SABC kit, SABC component

Antibodies

Over 10,000 primary antibodies and about 120 secondary antibodies
300 flow cytometry antibodies
Applied to ELISA, WB, IHC, IF, IP...etc

Recombinant Proteins

Over 6,600 proteins expressed by E.Coli, CHO and HEK293 Cell



ELISA Kits

1. **Ready-to-use:** Complete components, precoated 96 well plate, coating antibody overnight not required, saving assay time;
2. **High Specificity:** Use antibodies with high specificity, avoid wrong detection result caused by homologous interference;
3. **Strict QC:** Approved by recovery and linearity test, keep data accuracy;
4. **High Reproducibility:** Strictly controlled CV, batch-to-batch consistency

5. **Detailed Manual:** Including standard curve, recovery, CV, sensitivity;
6. **Various Products:** Over 9,300 items covering 4,600 targets, 16 species, wide product ranges;

7. **High Reliability:** Free of toxic substances, virus and animal components like mercaptoethanol, thiomersal etc;
8. **Cost Effective:** Reasonable price, high quality, global marketing

QuickTest ELISA Kits

Less time, more cost-effective

Category	Regular ELISA Kit	90min QuickTest	120min QuickTest	Advantage Analysis
Reaction Duration	4h	90min	120min	a great decrease of assay time
Washing Times	10	5	7	Less washing, easy operation
Washing Immersion	Yes	No	No	Faster washing without waiting
Dilution of Detection Reagents	Concentrated, Dilution Required	Ready-to-Use without dilution	Ready-to-Use without dilution	Avoid improper reagent preparation
Distinguished Reagent Colour	No	coloured	coloured	Avoid missing and mistaking in sample loading, improve loading efficiency
Precision	CV<8%	CV<6%	CV<6%	Lower CV, Higher Precision
Numbers of Reagents	9	6	7	Less Reagents

Accquant® ELISA Kits

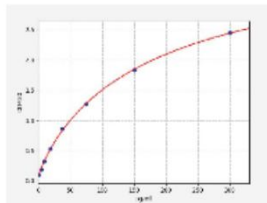
10 times improved sensitivity, half sample-loading!

Half of the sample amount

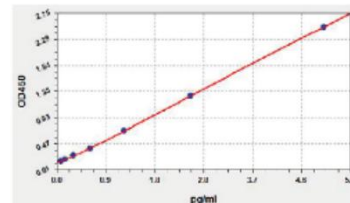
	Common ELISA Kits	Accquant® ELISA Kits
Sample Amount(ul per well)	100ul	50ul

10 times improved sensitivity

	Sensitivity	
	Common ELISA Kits	Accquant® ELISA Kits
Human IL-18	9.375pg/ml	0.983pg/ml
Human IL-6	2.813pg/ml	0.046pg/ml
Human IL-8	18.75pg/ml	0.46pg/ml
Human IL-15	9.375pg/ml	0.875pg/ml
...



tested samples (human serum)			
type	dilute	OD450	result
1#	1:2	0.102	ND
2#	1:2	0.122	ND



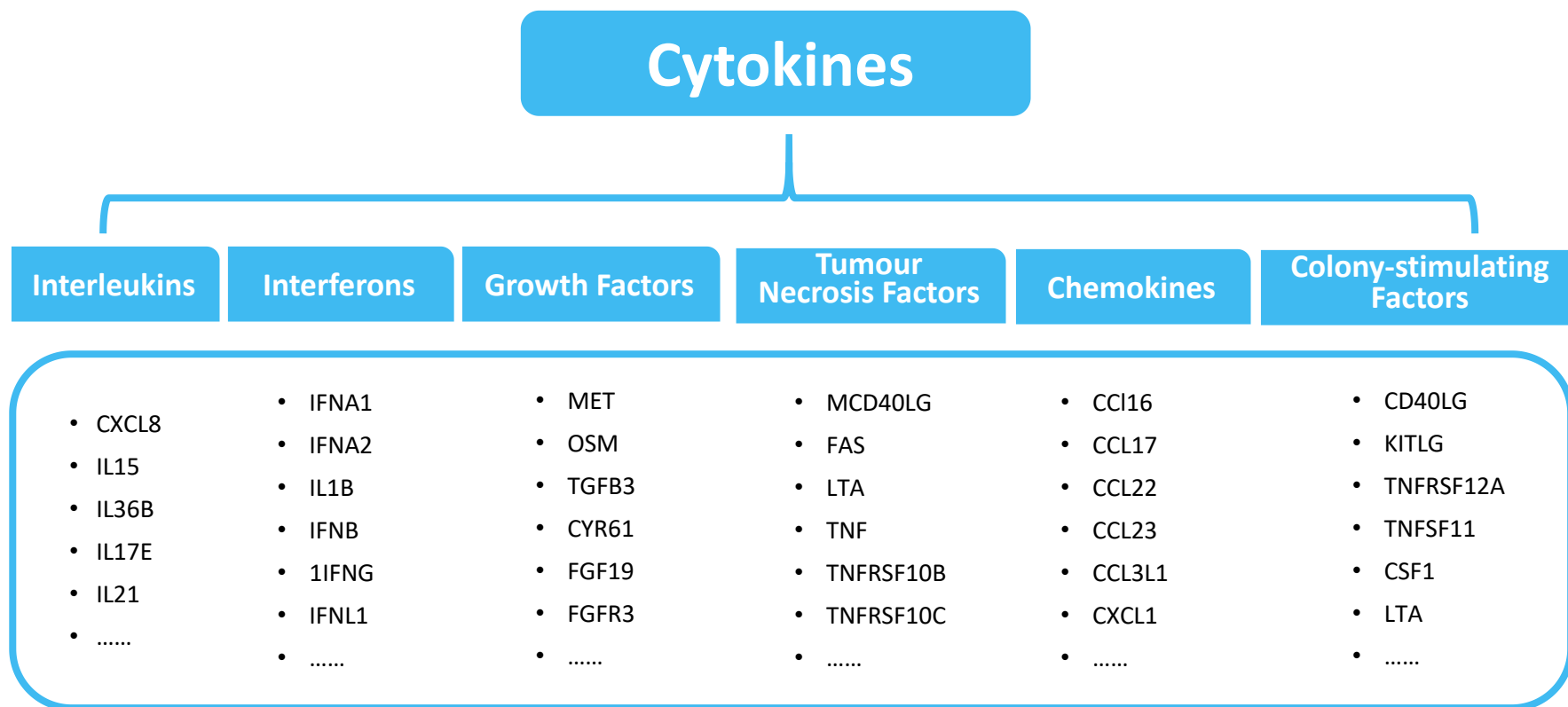
tested samples (human serum)			
type	dilute	OD450	result
1#	1:2	1.152	2.6
2#	1:2	0.562	0.8

*Detect same healthy human serum samples, common IL-6 ELISA Kit gets weak signal(left) while Accquant® IL-6 ELISA Kit obtains good result(right).

Components Differences

	Common ELISA Kits	Accquant® ELISA Kits
Components	ELISA Microplate(Dismountable)	ELISA Microplate(Dismountable)
	Lyophilized Standard	Lyophilized Standard
	Sample/Standard Dilution Buffer	Sample/Standard Dilution Buffer
	Biotin-labeled Antibody(Concentrated)	Biotin-labeled Antibody(Ready to Use)
	Antibody Dilution Buffer	Assay Dilution
	HRP-Streptavidin Conjugate(SABC)	HRP-Streptavidin(HRP-SA)
	SABC Dilution Buffer	Biotin System
	TMB Substrate	BS Dilution buffer
	Stop Solution	TMB Substrate
	Wash Buffer(25X)	Stop Solution
	Plate Sealer	Wash Buffer(25X)
	Product Description	Plate Sealer
		Product Description

Cytokine ELISA Kits



FineTest offers a variety of cytokine Elisa kits featured in batch-to-batch consistency, excellent linearity range, high sensitivity and specificity, wide applications etc.

Veterinary ELISA Kits



Canine



Monkey



Camel



Horse



Chicken



Bovine



Rabbit



Guinea pig



Goat



Porcine



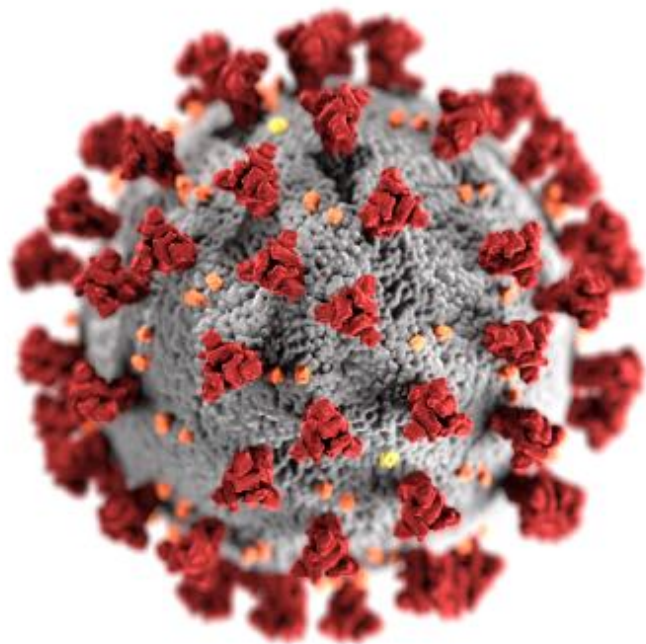
Sheep



Hamster

FineTest offers a wide range of over 1400 veterinary ELISA Kits covering Canine, Monkey, Chicken, Bovine, Porcine...16 species
Citation 600+

Virus ELISA Kits



FineTest offers a wide range of over 100+ virus ELISA Kits covering COVID-19, adenovirus, Monkeypox Virus, Cocksackievirus A16/B, cytomegalovirus, Chlamydia pneumoniae, Epstein-barr virus...etc applied to 20 kinds of virus

Antibody Drug ELISA Kits

FineTest ELISA kits are used for the detection and quantification of therapeutic monoclonal antibodies such as Bevacizumab® and biosimilars including rituximab and adalimumab, as well as the immunogenicity detection of Anti-Drug Antibodies (ADAs).

Advantages of these ELISA Kits

High specificity

No cross-reacting with non-target human serum protein or immunoglobulin

High sensitivity

High sensitivity and wide detection range

High accuracy

Low intra and inter assay variations (%CV)

Therapeutic mAbs(biosimilar) and ADAs ELISA Kits

Bevacizumab,Rituximab,
Enfortumab,Adalimumab ...etc

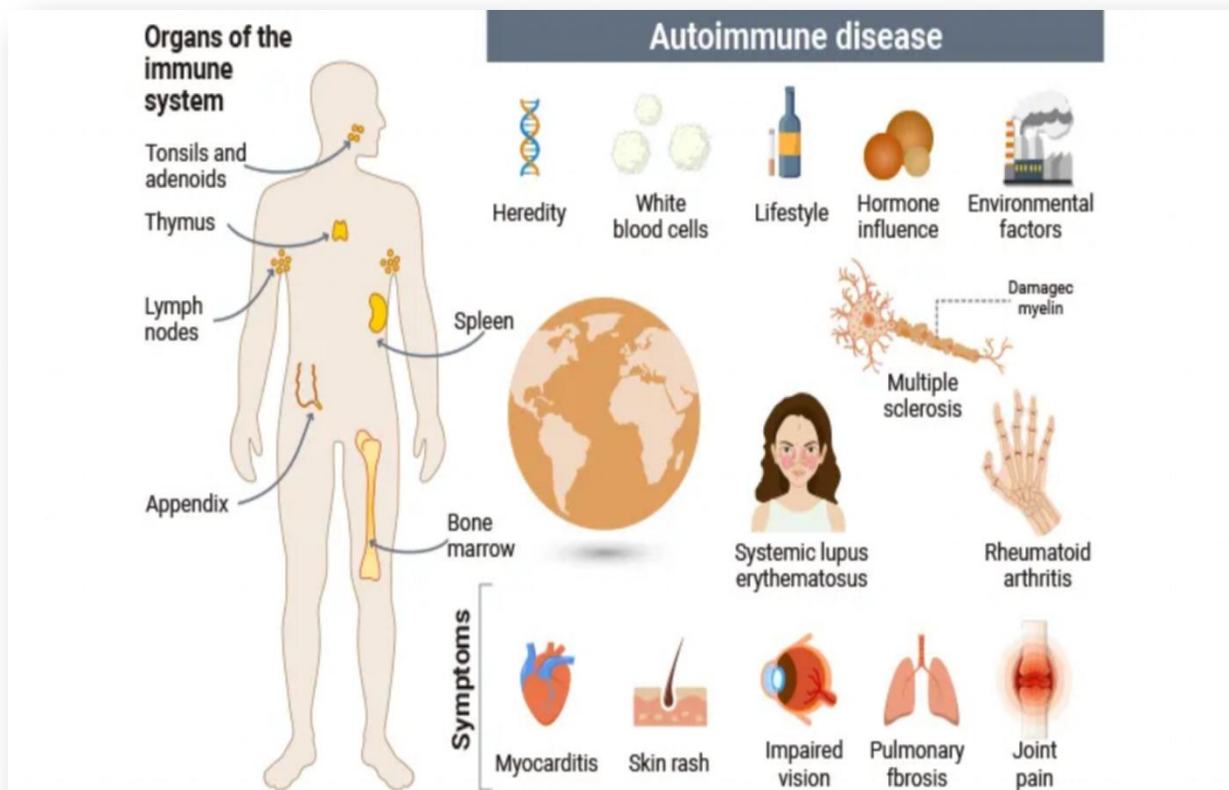
Anti-PEG antibody ELISA Kits

anti-PEG IgM and IgG antibodies

Host Cell Proteins(HCPs) ELISA Kits

CHO,HEK 293,E.coli,VERO,LPS...etc

Autoimmune Disease ELISA Kits



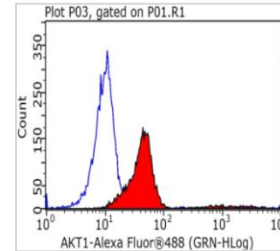
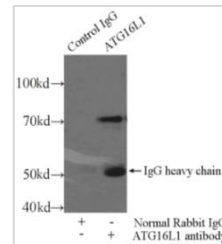
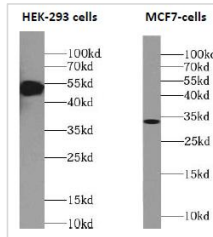
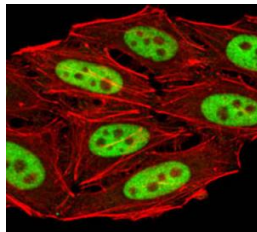
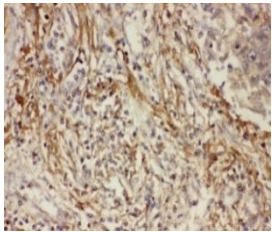
FineTest is committed to providing researchers with highly accurate and sensitive autoimmune antibody ELISA kits, covering a variety of common IgG or IgM type autoantibodies such as anti-dsDNA antibodies, anti-nucleosome antibodies, insulin antibodies, and rheumatoid factor antibodies.

These kits contribute to the study of the pathogenesis of autoimmune diseases, changes in biomarkers..

Antibodies



Validated Application



10000+ primary antibodies, including Mouse monoclonal and Rabbit polyclonal antibody

Validated image for WB, IHC, IF, IP...etc application

120 tagged secondary antibodies like HRP, FITC, Biotin...etc

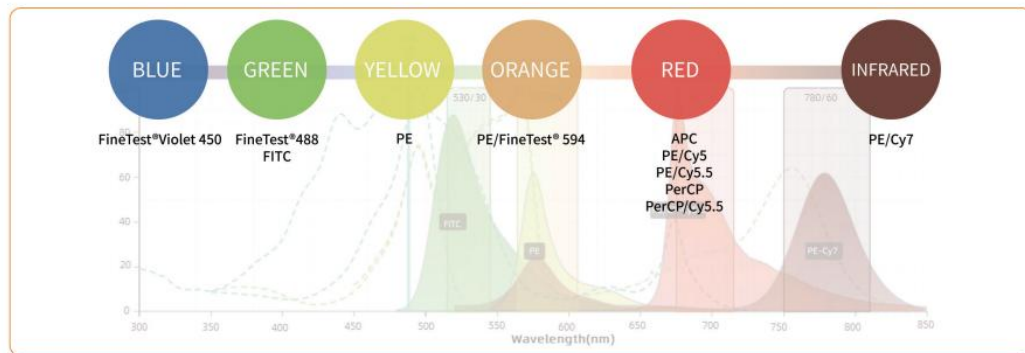
Different size available: 50ug, 100ul, 100ul, 200ul..etc

Custom antibody services

Flow Cytometry Antibodies

- ▶ High sensitivity/stability,excellent fluorescein labeling technology
- ▶ Multiple fluorescein labeled, hundreds of options
- ▶ More cost-effective, sufficient stock

Multiple fluorescein labeled



Hot Selling CD Markers

CD3	CD3E	CD4	CD8A	CD10	CD11A	CD11B	CD11C
CD14	CD15	CD16	CD18	CD19	CD20	CD22	CD25
CD28	CD29	CD31	CD34	CD38	CD40	CD45	CD47
CD48	CD50	CD56	CD73	CD80	CD86	CD90	CD105
CD107A	CD117	CD122	CD123	CD127	CD134	CD147	CD150
CD161	CD183	CD184	CD193	CD274	CD279		

Species	Cells Type	Recommendation	Cat.No
Human	T cells B cells NK cells	CD45-PerCP	PCP-30039
		CD3-FITC	FITC-30004
		CD16-PE	PE-30061
		CD56-PE	PE-30008
		CD19-APC	APC-30066
Human	Th1/Th2 cells	CD3-PerCP/Cyanine5.5	PCP55-30004
		CD4-FITC	FITC-30005
		IFN-γ-PE	PE-30053
Mouse	Th1/Th2 cells	IL4-APC	APC-30043
		CD3-PerCP/Cyanine5.5	PCP55-30002
		CD4-FITC	FITC-30001
		IFN-γ-PE	PE-30074
Human	Treg cells	IL4-APC	APC-30026
		CD4-FITC	FITC-30005
		CD25-PE	PE-30035
Mouse	Treg cells	CD127-APC	APC-30033
		CD4-FITC	FITC-30001
		CD25-PE	PE-30017
		FOXP3-APC	APC-30055

Loading Control, Tag Antibodies

FineTest provides a complete set of polyclonal and monoclonal loading control antibodies with high specificity and wide applications, which can be used in most qualitative, quantitative and localization analysis of proteins.

Why choose FineTest loading control antibodies?

A complete set of loading control antibodies with wide molecular weight range from 15kDa to 130kDa.

Strict QC and various validations, high performance accepted by wide customers.

Flexible size for your choice.

Catalogue No.	Product Name	MW(kDa)	Antibody Type	Applications
FNab00869	anti- beta actin antibody	42	Rabbit pAb	ELISA, IF, WB, IHC
FNab00873	anti- beta actin antibody	42	Mouse mAb	ELISA, WB, IHC, IF
FNab03342	anti- GAPDH antibody	36	Rabbit pAb	ELISA, IHC, WB
FNab03343	anti- GAPDH antibody	36	Mouse mAb	ELISA, IHC, WB, IF, FC, IP
FNab00880	anti- Beta Tubulin antibody	50-55	Rabbit pAb	ELISA, WB, IF, IP, IHC, FC
FNab09105	anti- Tubulin-beta antibody	50-55	Mouse mAb	ELISA, WB, IHC, IF, IP

Tag Antibodies

Tag Type	Catalogue No.	Applications	Product Name
Flag tag	FNab03154	ELISA, WB, IF	anti- Flag tag antibody
	FNab03155	ELISA, WB, IP	anti- Flag tag antibody
His tag	FNab00008	ELISA, WB, IP, IF	anti- 6*His, His-Tag antibody
	FNab00010	ELISA, WB	anti- 6*his,His tag antibody
GST tag	FNab03683	ELISA, WB	anti- GST Tag antibody
	FNab03684	ELISA, WB, IP	anti- GST tag antibody

Signal Enhancing Secondary Antibodies

FineTest adopts a polymerase-mark system, which makes more enzymes connect to the antibody and enhances the signal during IHC experiment.

Catalogue No.	English name	Tested application
ES-0005	Poly HRP-conjugated Affinipure Goat Anti-Mouse/Rabbit IgG (H+L)	IHC, ELISA
ES-0004	Poly HRP-conjugated Affinipure Goat Anti-Rabbit IgG (H+L)	ELISA, WB, IHC
ES-0003	Poly HRP-conjugated Affinipure Goat Anti-Mouse IgG (H+L)	ELISA, WB, IHC
ES-0002	SABC one-component	Elisa
ES-0001	SABC two-component	IHC
IHC0007	FineTest rabbit-DAB (Poly-HRP) Detection IHC Kit	
IHC0008	FineTest mouse-DAB (Poly-HRP) Detection IHC Kit	

Different Detection Systems Contrast

Amplification system	Size	Components	The experimental steps	Signal
PAP, APAAP	Very large > 5000kd	Anti-HRP-IgG HRP HRP-IgG	1. primary antibody 2. PAP or APAAP	Medium
ABC(SABC)	Large > 2000kd	Avidin(StreptAvidin) Biotin-HRP	1. primary antibody 2. biotin secondary antibody 3. ABC(SABC)	Strong
Poly-HRP-IgG	Medium: 700-1200kd	HRP(multiple)-IgG (secondary antibody)	1. primary antibody 2. secondary antibody	Very strong
HRP-IgG(normal)	Small: 200-282kd	HRP(1-3)-IgG (secondary antibody)	1. primary antibody 2. secondary antibody	Weak or none

★ Contrast With Other Brands



• Abcam(ab209161) Poly-HRP Secondary, DAB staining for 1 minute.



• FineTest® Poly-HRP Secondary, DAB staining for 1 minute.

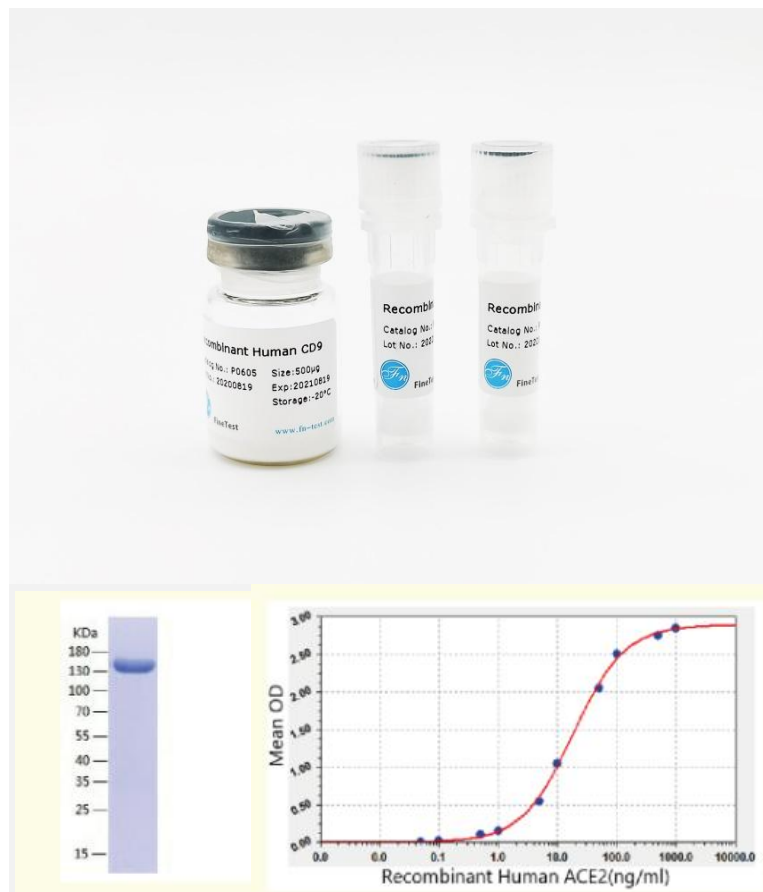


• Common brand Poly-HRP Secondary from market, SABC staining for 1 minute.



• FineTest® Poly-HRP Secondary, DAB staining for 1 minute.

Recombinant Proteins



Items: 6600+
In stock: 3500+
Cytokines: 600+

Accept
customizing

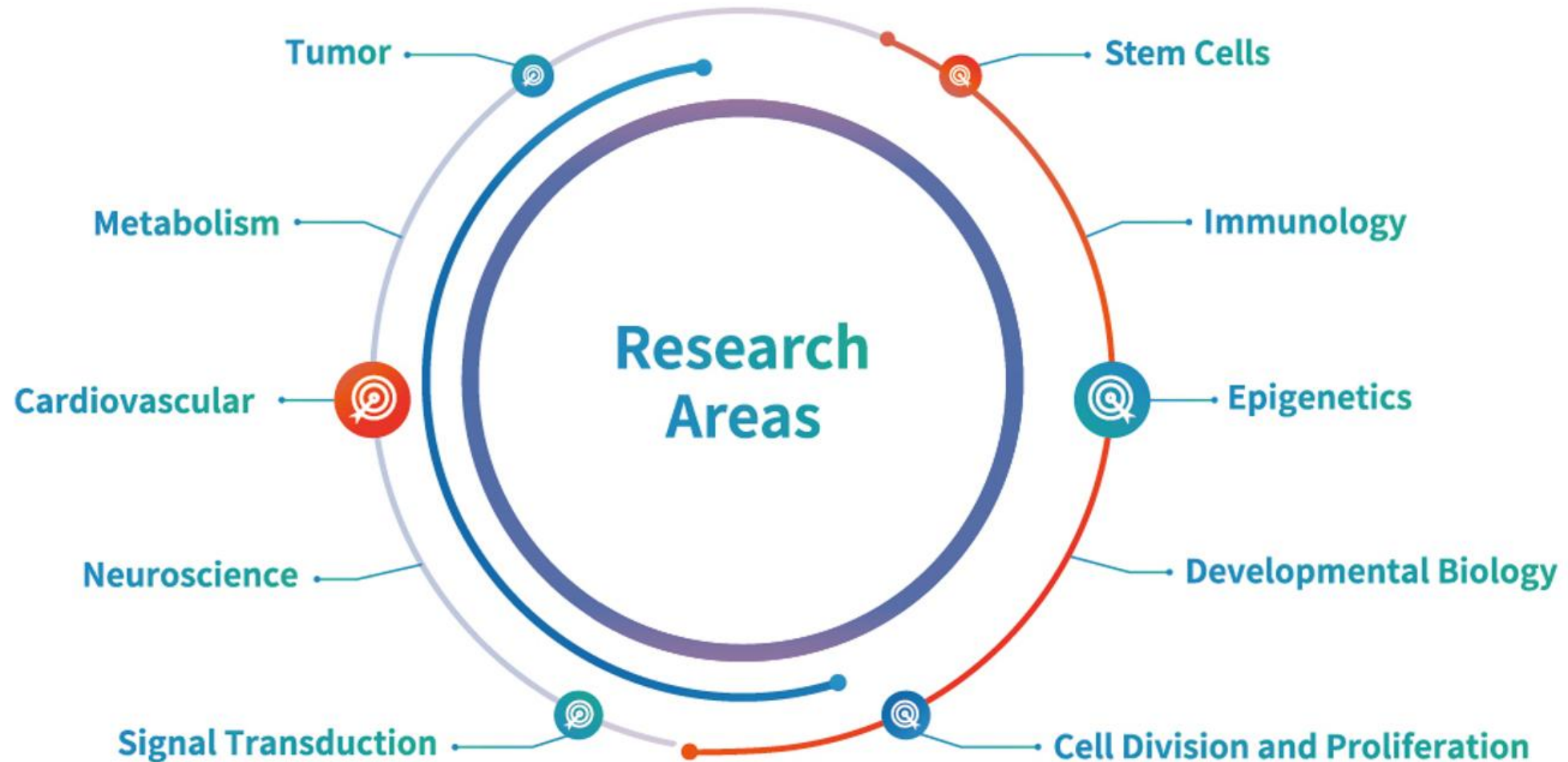
Prokaryotic Expression

E.coli expression system has stably expressed more than 6000 kinds of proteins with high purity and good activity, which can meet most experiments.

Eukaryotic Expression

High purity: Greater than 90% by SDS-PAGE
Good activity: Catalytic activity, cell proliferation
Low endotoxin: Less than 1EU/μg, LAL
Multiple species: Human/Mouse/Rat/Monkey/Dog
Self-developed, without animal ingredients
Tag choice: His/Fc/tag-free protein

Research Areas



Reagents

Cell function assay kits



Cell Apoptosis



Cell Proliferation Kits



Cell Viability/Cytotoxicity
Kits



Cell Cycle Kits

Other reagents

DAB Substrate Kit

IHC kit

SABC kit, SABC component

FC Auxiliary Reagent

ELISA Auxiliary Reagent

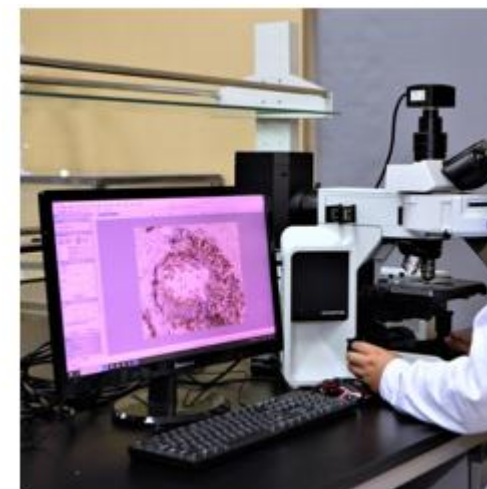
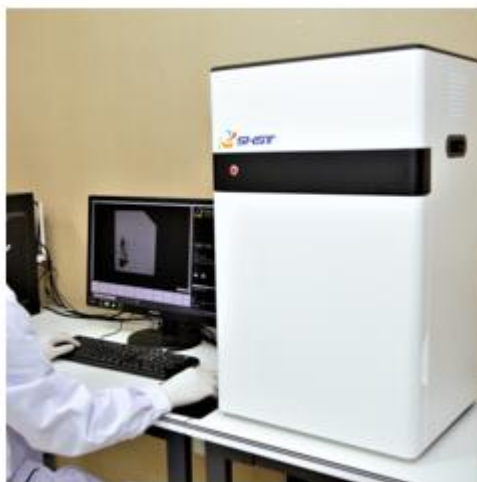
BCA Protein Assay Kit

GMP workshop

With 1200m² of 10,000-level GMP workshop, GMP operation specifications are strictly implemented, and the production environment is clean and dust-free, with constant temperature and humidity all the year round, so as to ensure the product quality and experimental conditions are not affected by the environment to the greatest extent.



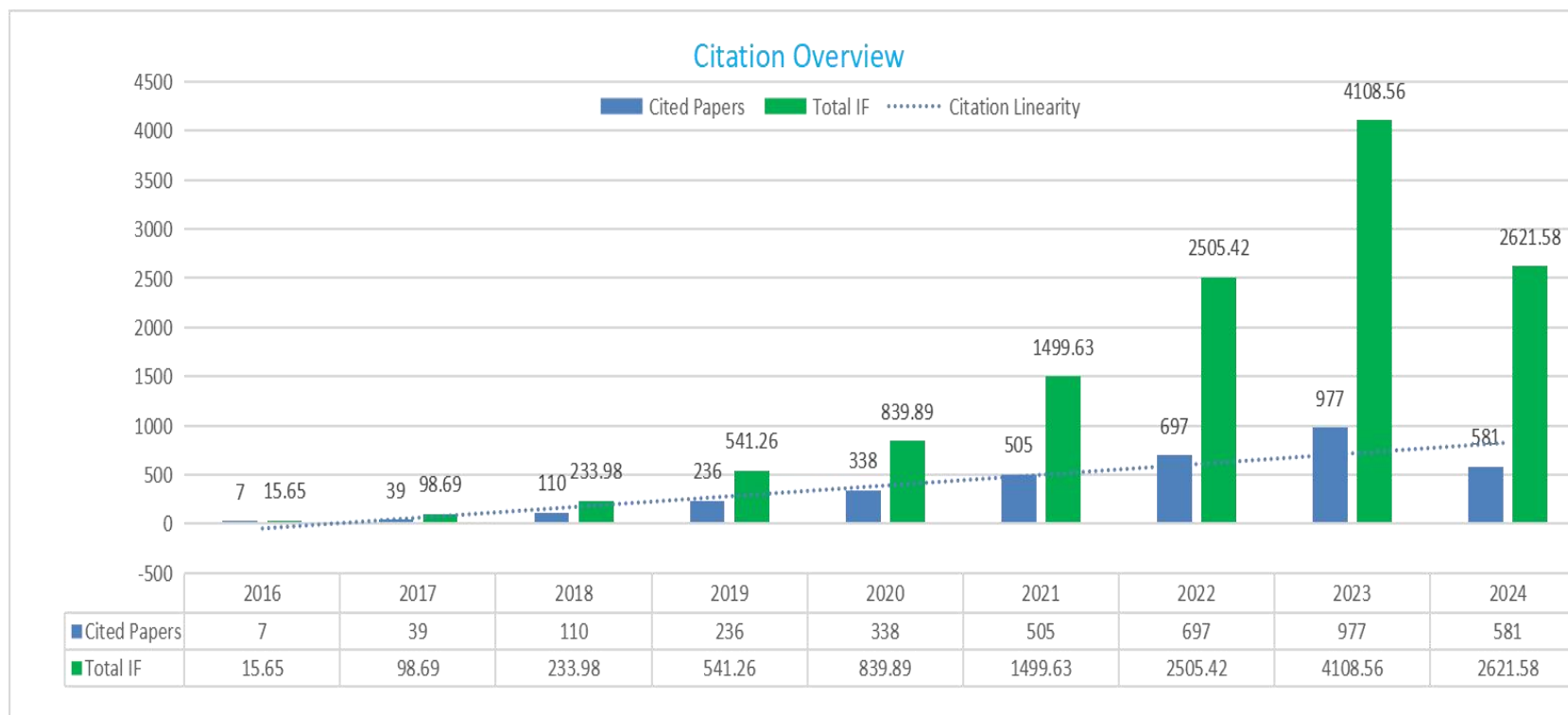
Quality Assurance



Citations

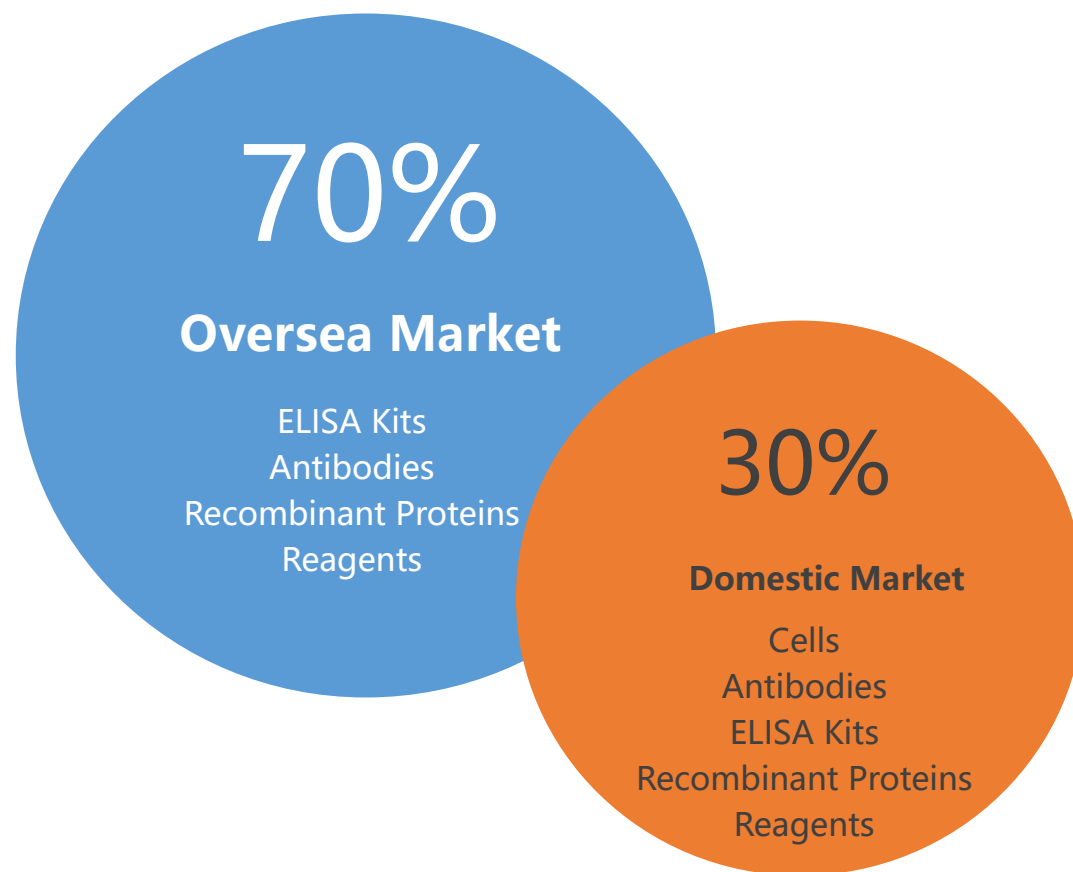
Now, 3400+ cited papers has been published by life sciences related journals with an annual increase of 1000+ citations.

Total IF 12000+

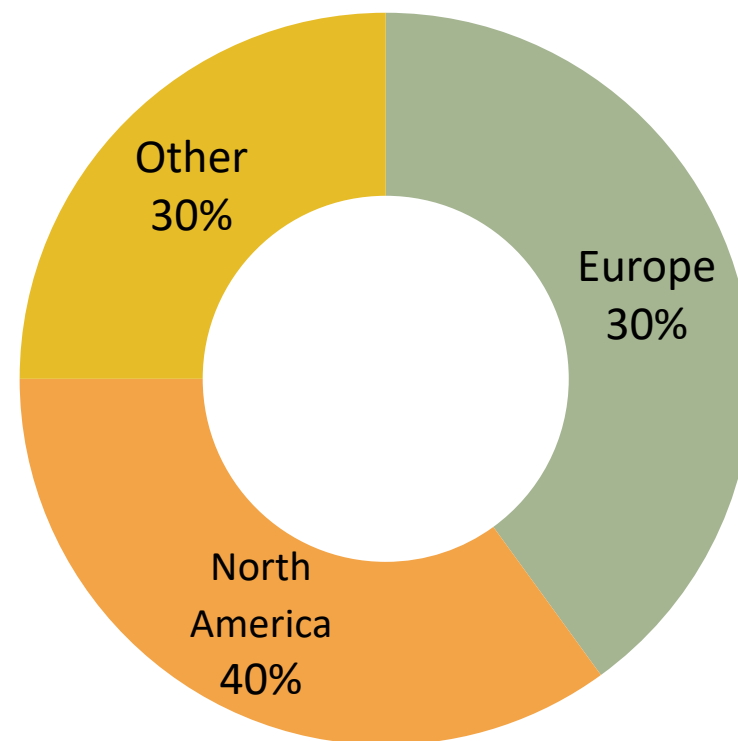


We offered publication rewards for researchers who use FineTest products to publish a paper!

Marketing Distribution



Sales Region



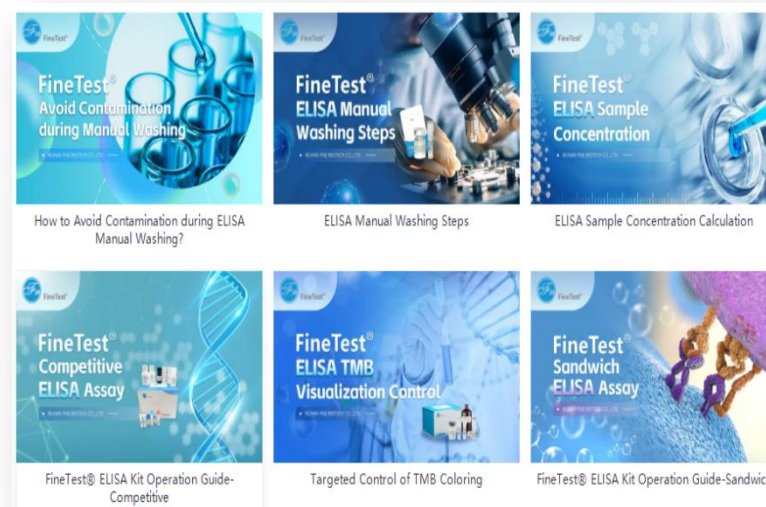
E-resources

website: www.fn-test.com

Flyers and brochures



Videos



Trouble shooting

- ✓ Seven Tips for Immunoprecipitation Assay
- ✓ Antibody Flow Cytometry Protocol
- ✓ Five Tips for IHC Troubleshooting
- ✓ Western Blot for Low Molecular Weight Protein
- ✓ Immunohistochemistry Background Staining Analysis
- ✓ 6 Factors for Monoclonal Antibody Fusion Effect
- ✓ Role of Animal Immune in Antibody Production
- ✓ How Does FineTest Poly HRP Secondary Antibody Amplify Signal?
- ✓ Antigen Retrieval Solution: Protease-induced Epitope Retrieval (PIER)
- ✓ Antigen Retrieval Methods Using Surfactants
- ✓ Role of Intermolecular Forces in Background Staining: Ionic Interaction and Hydrophobic Interaction
- ✓ Background Staining or Non-specific Binding of Antibodies in Immunohistochemistry
- ✓ Find Causes of Background and Nonspecific Reaction in Immunohistochemistry Test

Marketing Platforms

