



Autoimmune Disease ELISA Kits

Wuhan Fine Biotech Co., Ltd.



Autoimmune Disease ELISA Kits

❖ Autoimmune Disease (AID) is a kind of diseases in which the body's immune system mistakenly attacks its own normal cells or tissues, resulting in inflammation and damage. More than 100 types of AID have been identified with a prevalence rate of up to 15%. The presence of one or more autoantibodies (AAb) in the serum is an important marker of AID. Detecting AAb during a physical examination can help diagnose AID, monitor the activity of AID and the effectiveness of treatment, and prevent the occurrence and development of AID.

Autoantibody



Autoantibodies(AAb) are antibodies produced by the human immune system that targets self-tissues. They typically include natural autoantibodies and pathological autoantibodies.

Natural autoantibodies are usually IgM class and encoded by unmutated V(D)J genes, with low affinity for self-antigens. Natural autoantibodies provide the first line of defense against infections and have certain physiological functions, such as maintaining cell function and regulating immune system homeostasis. In contrast, IgG class autoantibodies, which are generated through somatic cell mutations and highly affinitive for self-antigens, reflect a pathological process. They may lead to the clearance of normal cells, disruption of antigen-receptor signaling or cellular effector functions, and consequently result in self-histopathological lesions-induced autoimmune diseases.

Types of Autoimmune Diseases



Currently, over 100 types of autoimmune diseases have been identified, which can be broadly categorized into two types: Organ-Specific Autoimmune Diseases and Systemic Autoimmune Diseases.

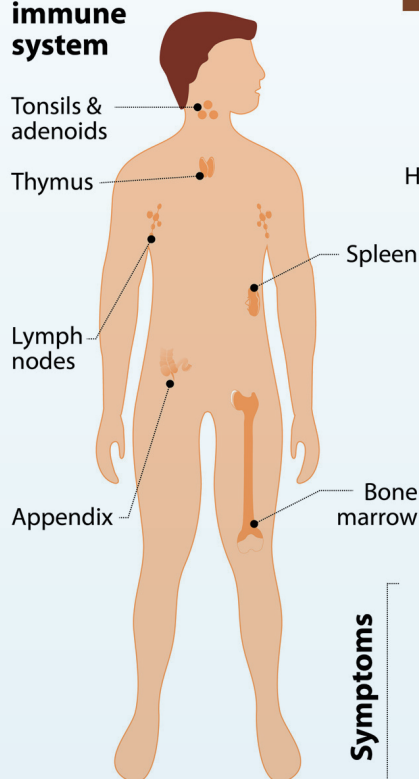
01 Organ-Specific Autoimmune Diseases

These diseases involve immune responses primarily targeting specific organs or tissues. Common examples of organ-specific autoimmune diseases include autoimmune thyroid diseases (AITD), Psoriasis, Multiple Sclerosis, Autoimmune Hepatitis, Myasthenia Gravis, Pemphigus Vulgaris, Type I diabetes (T1DM), etc.

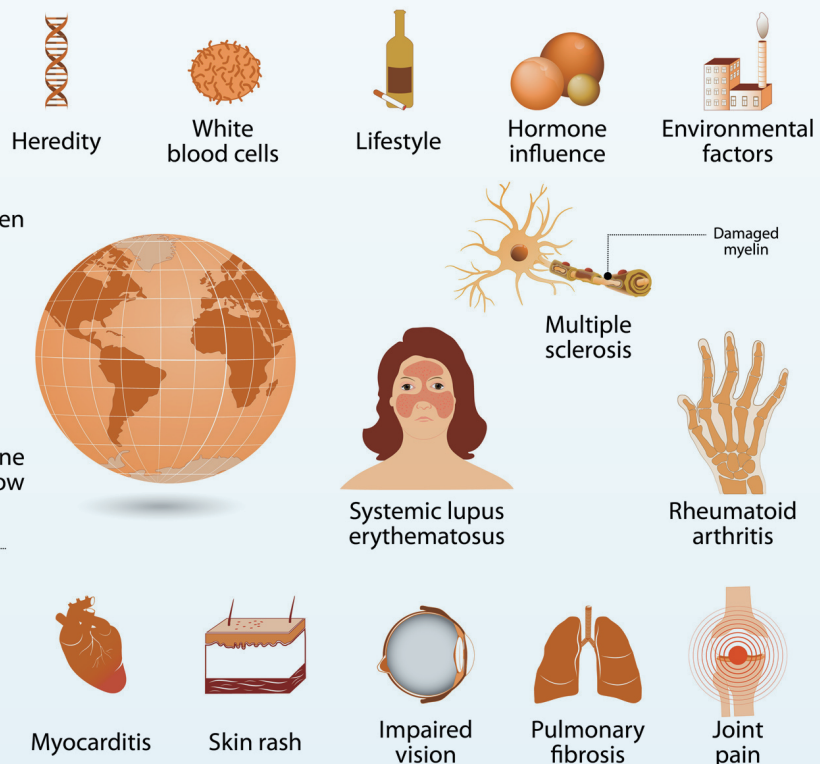
02 Systemic Autoimmune Diseases

In contrast, systemic autoimmune diseases involve multiple organs and tissues, with immune responses affecting various systems throughout the body. Some common examples of systemic autoimmune diseases include Systemic lupus erythematosus, Behçet's disease, Rheumatoid Arthritis, Inflammatory bowel disease, Scleroderma, Systemic Vasculitis, etc.

Organs of the immune system



Autoimmune disease



◆ FineTest® is committed to offering researchers highly accurate and sensitive autoimmune antibody ELISA Kits, covering a variety of common IgG or IgM type autoantibodies such as anti-dsDNA antibodies, anti-nucleosome antibodies, insulin antibodies, and rheumatoid factor antibodies. These kits contribute to the study of the pathogenesis of autoimmune diseases and changes in biomarkers.

| Cat.NO | Product Name | Target |
|-----------|---|----------------------|
| EH4166 | Human anti-NMDAR Antibody(anti-N-methyl-D-aspartic Acid receptor Antibody) ELISA Kit | NMDAR Ab |
| EH4028 | Human ASMA(Anti Smooth Muscle Antibody) ELISA Kit | ASMA |
| EH4137-CM | Human ACCPA(anti-cyclic citrullinated peptide antibody) ELISA Kit | ACCPA |
| EH4161 | Human anti-nuclear antibody ELISA Kit | ANA |
| EH2728 | Human C1q-Ab(Anti-Complement 1q Antibody) ELISA Kit | C1q-Ab |
| EH4812 | Human anti-MBP(anti-myelin basic protein antibody)ELISA Kit | MBP Ab |
| EH1442 | Human IAA(Insulin Autoantibodies) ELISA Kit | IAA |
| EH4345 | Human β 1-ARA(beta 1 adrenergic receptor autoantibody) ELISA Kit | β 1-ARA |
| EM4270 | Mouse RF-IgA(Rheumatoid Factor IgA) ELISA Kit | RF Ab (IgA) |
| EH3984 | Human β 2-GP1 Ab IgA(β 2-Glycoprotein 1 antibody IgA) ELISA Kit | β 2-GP1 Ab IgA |
| EH4418 | Human EM-IgG(Endometrium-Immunoglobulin G) ELISA Kit | EM-IgG |
| EH4419 | Human HCG-IgG(Human chorionic gonadotropin-Immunoglobulin G) ELISA Kit | HCG-IgG |
| EH4420 | Human AO-IgG(Ovary-Immunoglobulin G) ELISA Kit | AO-IgG |
| EH4955 | Human DS-DNA-IgG(double stranded DNA-Immunoglobulin G) ELISA Kit | DS-DNA-IgG |
| EH4421 | Human ZP-IgG(zona pellucida-Immunoglobulin G) ELISA Kit | ZP-IgG |
| EH4422 | Human TA-IgG(Trophoblast antigen-Immunoglobulin G) ELISA Kit | TA-IgG |
| EH4961 | Human ACA-IGG (cardiolipin-Immunoglobulin G) ELISA Kit | ACA Ab (IgG) |
| EH5119 | Human MOG Autoantibody(Myelin-oligodendrocyte glycoprotein Autoantibody) ELISA Kit | MOG AAb |
| EH0478 | Human ACA-IgG(Anti-Cardiolipin Antibody IgG) ELISA Kit | ACA-IgG |
| EH4718 | Human AQP4 Autoantibody(Aquaporin-4 Autoantibody) ELISA Kit | AQP4 AAb |
| EH4147 | Human anti-TPO(anti-thrombopoietin) ELISA Kit | TPO |
| EH4757 | Human anti-IL22 autoantibody ELISA Kit | IL22 AAb |
| EH3100 | Human GAD-Ab(Anti-Glutamic Acid Decarboxylase antibody) ELISA Kit | GAD-Ab |
| EH3399-CM | Human MUSKAb(Muscle Skeletal Receptor Tyrosine Kinase antibody) ELISA Kit | MUSK Ab |
| EH4732 | Human AS-IgA(anti sperm-Immunoglobulin A) ELISA Kit | AS-IgA |
| EH2640 | Human Anti-AChR(Anti-Acetylcholine Receptor Antibody) ELISA Kit | AChR Ab |
| EH2645 | Human Anti-MPO(Anti-Myeloperoxidase Antibody) ELISA Kit | MPO Ab |
| EH4726 | Human IA-2 Autoantibody ELISA Kit | IA-2 AAb |
| EH3153 | Human GM-CSF Ab(Anti-Granulocyte Macrophage Colony Stimulating Factor Antibody) ELISA Kit | GM-CSF Ab |

View more products, please visit www.fn-test.com

Wuhan Fine Biotech Co., Ltd



1-2 Floor, BLD 22, Optics Valley Biopharmaceutical Accelerator, No.388 Gaoxin 2nd Road, East Lake High Tech Development Zone, Wuhan, 430074, Hubei, China



www.fn-test.com



fine@fn-test.com

