

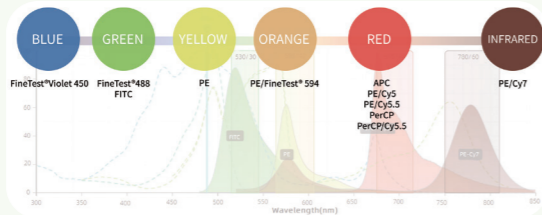


03 Flow Cytometry Antibodies

Advantages

- ▶ High sensitivity/stability, excellent fluorescein labeling technology
- ▶ Multiple fluorescein labeled, hundreds of options
- ▶ More cost-effective, sufficient stock

Multiple fluorescein labeled



Flow Cytometry Colour Matching recommendation

Free Trial

Species	Cell types	Recommendation	Cat.NO
Human	T/B/NKCells	CD45-PerCP	PCP-30039
		CD3-FITC	FITC-30004
		CD16-PE	PE-30061
		CD56-PE	PE-30008
		CD19-APC	APC-30066
Human	Th1/Th2 Cells	CD3-PerCP/Cyanine5.5	PCP55-30004
		CD4-FITC	FITC-30005
		IFN-Y-PE	PE-30053
		IL4-APC	APC-30043
Mouse	Th1/Th2 Cells	CD3-PerCP/Cyanine5.5	PCP55-30002
		CD4-FITC	FITC-30001
		IFN-Y-PE	PE-30074
		IL4-APC	APC-30026
Human	Treg Cells	CD4-FITC	FITC-30005
		CD25-PE	PE-30035
		CD127-APC	APC-30033
Mouse	Treg Cells	CD4-FITC	FITC-30001
		CD25-PE	PE-30017
		FOXP3-APC	APC-30055

New Launch

ELISA Kit/Antibody/Reagent



Wuhan Fine Biotech Co., Ltd.

+86-027-87384275 www.fn-test.com
 +86-027-87800889 fine@fn-test.com

1-2 Floor, BLD 22, Optics Valley Biopharmaceutical Accelerator, No.388 Gaoxin 2nd Road, East Lake High Tech Development Zone, Wuhan, 430074, Hubei, China

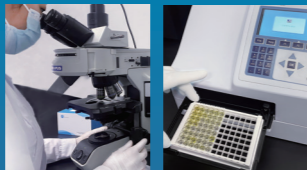
Wuhan Fine Biotech Co., Ltd.



Wuhan Fine Biotech Co., Ltd (FineTest®) is an ISO 9001:2015 certified manufacturer which specializes in providing ELISA Kits, Antibodies, Recombinant Proteins and relevant Reagents for research use since 2014.

The factory has a 1200m² GMP workshop covering the core production of main product lines. With professional tech support and rich production experience, our high quality products are widely sold to over 60 countries by cooperating with authorized distributors. Meanwhile we work closely with influential biological platforms like Citeab, Biocompare to promote online marketing.

Now more than 3600+ papers using FineTest's products are cited by international journals and there is an annual increase of about 1000+ citations.



1200m² **3600+** **1000+** **60+**

10 K class GMP clean room Citations in total till now New Citations increase annually Countries across global market

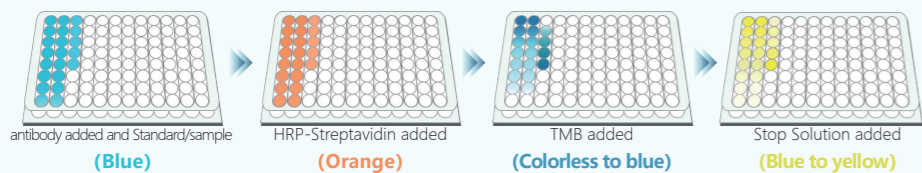
O1 QuickTest ELISA Kits

- Quick**: Time-saving 2-2.5h
- Stable**: Special protective agent added, higher stability and low CV
- Multi-options**: 2000+ items, various sample validation
- Distinctive**: Color-coded reagents for avoiding mistakes

Comparison

	★ QuickTest ELISA Kits	VS	Common ELISA Kits
Time	✓ 90-120min		4h
Reagents	✓ Color-coded, Ready to use		No color-coded and needs to be diluted
Sample Size	✓ 50ul		100ul

Color change diagram during the experimental process



View more QuickTest ELISA Kits, please scan the code



Selected hot-selling products

Cat.NO	Product Name	Sensitivity	Range
QT-EU3602	ACTH(Corticotropin) ELISA Kit	7.5pg/ml	12.5-800pg/ml
QT-EH0027	Human ACE2 QuickTest ELISA Kit	0.234ng/ml	0.391-25ng/ml
QT-EH2593	Human ADP QuickTest ELISA Kit	0.938ng/ml	1.563-100ng/ml
QT-EH20018	Human CRP QuickTest ELISA Kit	0.938ng/ml	1.563-100ng/ml
QT-EH3058	Human FGF23 QuickTest ELISA Kit	9.375pg/ml	15.625-1000pg/ml
QT-EH0150	Human GDF15 QuickTest ELISA Kit	14.063pg/ml	23.438-1500pg/ml
QT-EH0410	Human GFAP QuickTest ELISA Kit	0.188ng/ml	0.313-20ng/ml
QT-EH0164	Human IFN γ QuickTest ELISA Kit	9.375pg/ml	15.625-1000pg/ml
QT-EH3267	Human IL-17A QuickTest ELISA Kit	18.75pg/ml	31.25-2000pg/ml
QT-EH0185	Human IL-1 β QuickTest ELISA Kit	2.344pg/ml	3.906-250pg/ml
QT-EH0201	Human IL-6 QuickTest ELISA Kit	0.28pg/ml	0.46-30pg/ml
QT-EH20020	Human Lipocalin-2 QuickTest ELISA Kit	18.75pg/ml	31.25-2000pg/ml
QT-EH2243	Human MAP1LC3B QuickTest ELISA Kit	0.094ng/ml	0.156-10ng/ml
QT-EH0222	Human MCP-1 QuickTest ELISA Kit	9.375pg/ml	15.625-1000pg/ml
QT-EH0238	Human MMP-9 QuickTest ELISA Kit	0.188ng/ml	0.313-20ng/ml
QT-EH0018	Human MPO QuickTest ELISA Kit	0.938ng/ml	1.563-100ng/ml
QT-EH1205	Human NEFL QuickTest ELISA Kit	9.375pg/ml	15.625-1000pg/ml
QT-EH3468	Human OC/BGP QuickTest ELISA Kit	0.141ng/ml	0.234-15ng/ml
QT-EH4007	Human PEA QuickTest ELISA Kit	18.75pg/ml	31.25-2000pg/ml
QT-EH0022	Human PLGF QuickTest ELISA Kit	9.375pg/ml	15.625-1000pg/ml
QT-EH3832	Human sTREM-1 QuickTest ELISA Kit	18.75pg/ml	31.25-2000pg/ml
QT-EH0287	Human TGF β 1 QuickTest ELISA Kit	18.75pg/ml	31.25-2000pg/ml
QT-EMK0189	Monkey TSH QuickTest ELISA Kit	0.0094uIU/ml	0.0156-1uIU/ml
QT-EM0109	Mouse IL-1 β QuickTest ELISA Kit	1.875pg/ml	3.125-200pg/ml
QT-EM0112	Mouse IL-2 QuickTest ELISA Kit	9.375pg/ml	15.625-1000pg/ml
QT-EM0121	Mouse IL-6 QuickTest ELISA Kit	0.938pg/ml	1.563-100pg/ml
QT-EM1592	Mouse IL-8/cxcl15 QuickTest ELISA Kit	9.375pg/ml	15.625-1000pg/ml
QT-EM0153	Mouse PCSK9 QuickTest ELISA Kit	9.375pg/ml	15.625-1000pg/ml
QT-EM0205	Mouse VEGF QuickTest ELISA Kit	9.375pg/ml	15.625-1000pg/ml
QT-ERB0126	Rabbit TNF- α (Tumor Necrosis Factor Alpha) ELISA Kit	4.688pg/ml	7.813-500pg/ml



View more Flow Cytometry Antibodies, please scan the code



O2 Cell Function Assay Kits

FineTest® offers a comprehensive of various cell function assay kits, including detection for cell apoptosis, cell cycle, cell proliferation/cytotoxicity/viability etc. We provide a complete detection solution for cell function and help you to conduct cell-related researches.



Our self-developed cell function assay kits are featured with high sensitivity, short assay time, high accuracy and wide choices. Welcome scientific researchers and institutions to contact us for ordering.

Cell Apoptosis

Cell apoptosis is different from cell necrosis in cell morphology and physiology. Changes on cell membrane, cytoplasm, nucleus, nucleic acid and apoptosis-associated proteins are obvious. Compared with normal or necrotic cells, characteristics are also distinct.

Annexin V Apoptosis Kit
TUNEL Apoptosis Kit

Cell Proliferation /Cytotoxicity/Viability

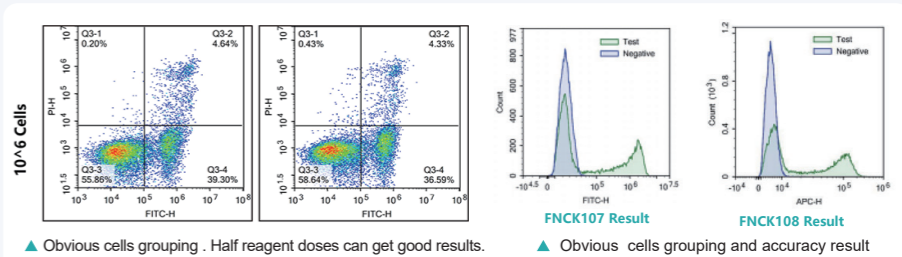
FineTest® can offer various detection methods for cell proliferation/cytotoxicity/viability, including EdU, Calcein AM/PI, CCK-8 assay etc. You can choose the relevant cell assay kit based on the sample type and detection purpose.

Enhanced Cell Counting Kit 8 (CCK8/WST-8)
MTT-Cell Based Proliferation /Toxicity Assay Kit
Cell Viability/Cytotoxicity Kits
EdU Proliferation Kits

Cell Cycle

Using the property that intracellular DNA can bind to fluorescent dyes (e.g. propidium iodide-PI), the DNA content of cells varies from period to period and thus binds to different fluorescent dyes, and the fluorescence intensity detected by the flow cytometer varies.

Cell Cycle Kits



▲ Obvious cells grouping. Half reagent doses can get good results. ▲ Obvious cells grouping and accuracy result