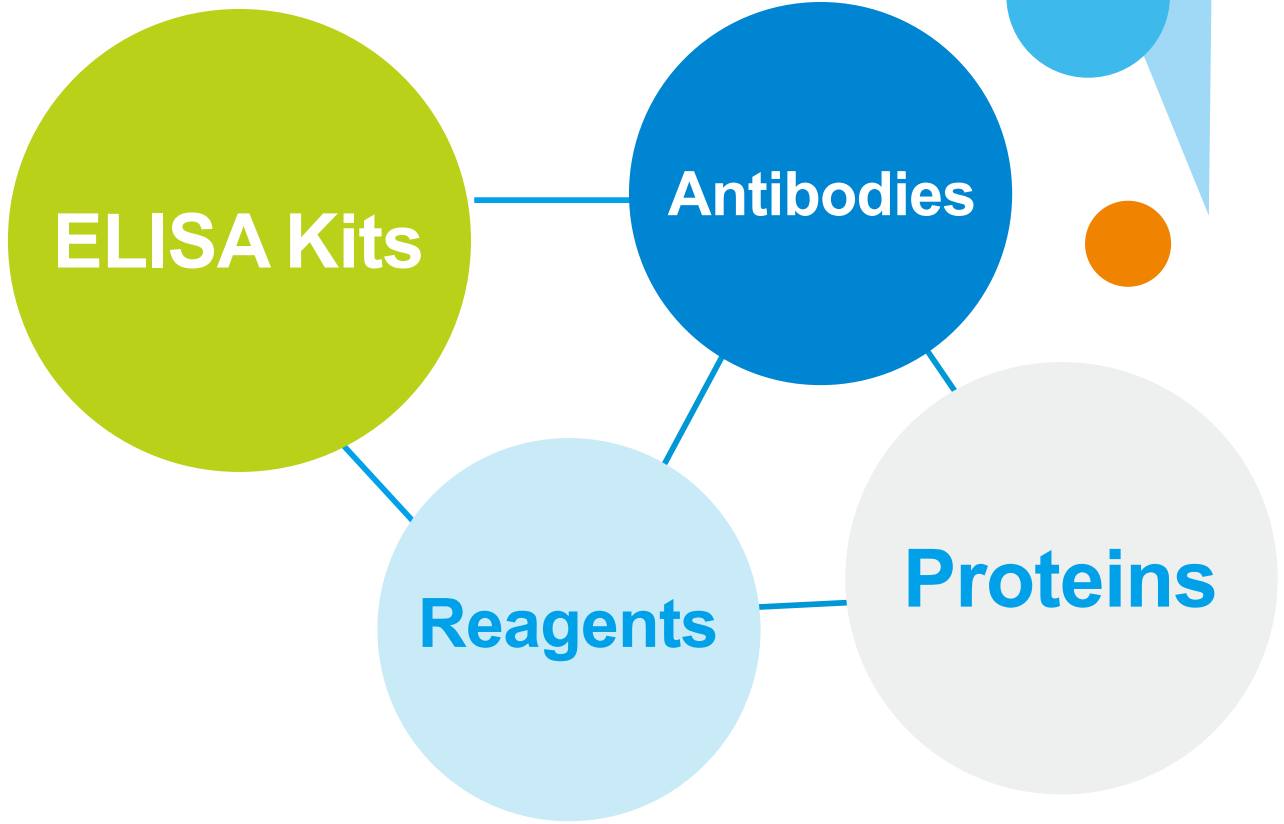




FineTest®



**YOUR GOOD  
RESEARCH PARTNER**



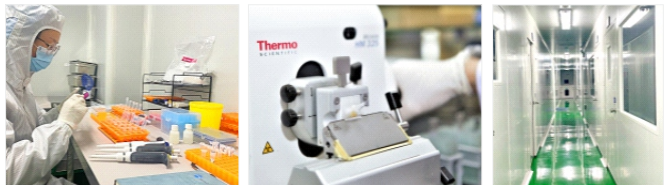
# About FineTest®

Wuhan Fine Biotech Co., Ltd (FineTest®) is an ISO 9001:2015 certified manufacturer which specializes in providing ELISA Kits, Antibodies, Recombinant Proteins and relevant Reagents for research use since 2014.

The factory has a 1200m<sup>2</sup> GMP workshop covering the core production of main product lines. With professional tech support and rich production experience, our high quality products are widely sold to over 60 countries by cooperating with authorized distributors. Meanwhile we work closely with influential biological platforms like Citeab, Biocompare to promote online marketing.

Now more than 2800+ papers using FineTest's products are cited by international journals and there is an annual increase of about 800+ citations.

<b>1200m<sup>2</sup></b> 10 K class GMP clean room	<b>2800+</b> Citations in total till now	<b>800+</b> New Citations increases every year.	<b>60+</b> Countries market over global
---	--	--	--



## Qualifications



Ce certificate



A patent certificate



ISO9001 certification  
(international edition)



Technology "Little Giant"



High-tech Enterprise Certificate



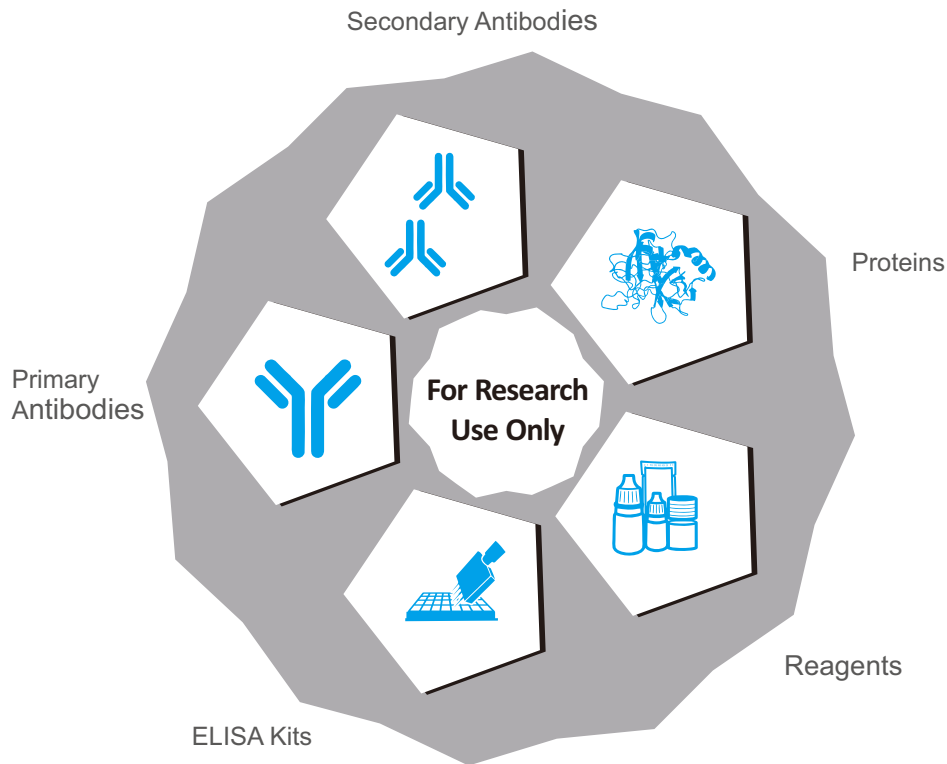
Gazelle Enterprises



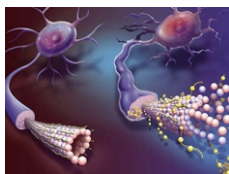
3551 Optical Valley Talent  
Scheme Certificate of Honor

## Our Products

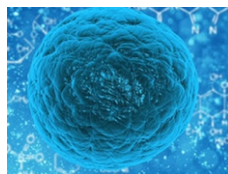
We have 4 main product lines (ELISA Kits, Antibodies, Proteins and Reagents) involving in 10 research areas such as Metabolism, Signal Transduction, Neuroscience, Host Residue Detection...etc, which can cover your various research topics.



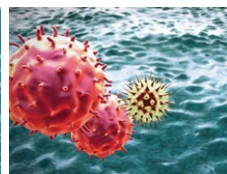
## Research Areas



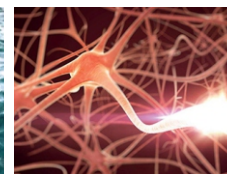
Metabolism



Signal Transduction



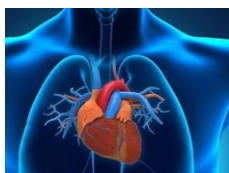
Immunology



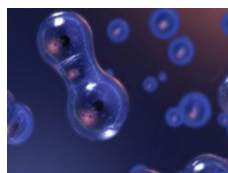
Neuroscience



Tumor



Cardiovascular



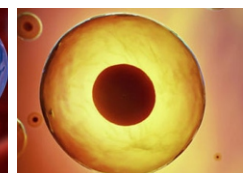
Cell Division and Proliferation



Developmental biology



Epigenetics

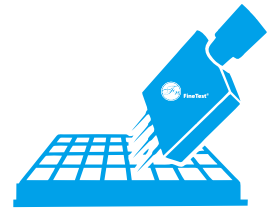


Stem Cells

## ELISA Kits

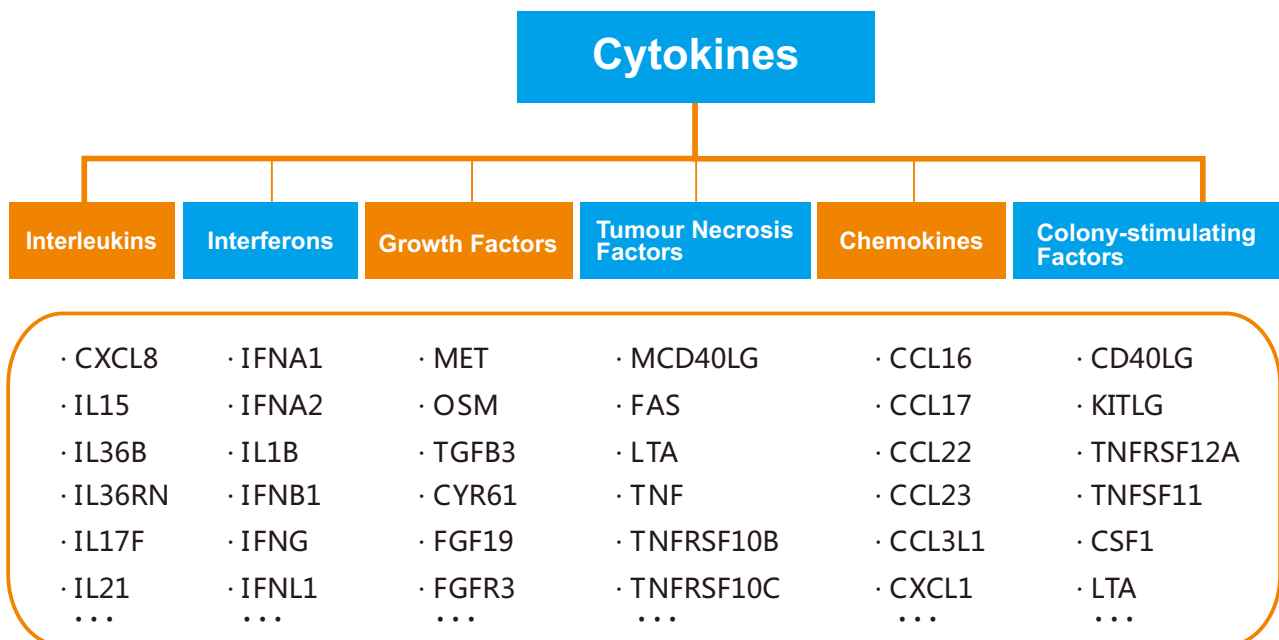
Ready-to-use enzyme-linked immunosorbent assay kits (ELISA Kits) are FineTest® most trusted product line. 8000+ high-sensitivity ELISA Kits cover about 16 species not only regular species like Human, Rat, Mouse, but also rare species like Bovine, Chicken, Canine...etc. You can choose the best appropriate ELISA type as you want, including sandwich ELISA Kits, competitive ELISA Kits, indirect ELISA Kits. About 2400 papers using Fine Test® ELISA Kits have been published in international well-known journals.

- ◆ Ready To Use
- ◆ Selected Antibody Pairs
- ◆ Validated Sample
- ◆ Excellent Linearity
- ◆ Low CV between batches
- ◆ High Specificity



## Cytokine ELISA Kits

Cytokines play an important role in intercellular signal transduction, which are synthesized and secreted by stimulation. They are involved in cellular activities by binding with relevant receptors, regulation of cell growth and differentiation, and immune response regulation. Cytokines include interleukins, interferons, tumour necrosis factors, colony-stimulating factors, and chemokines etc



FineTest® offers a variety of cytokine ELISA Kits featured in batch-to-batch consistency, excellent linearity range, high sensitivity and specificity, wide applications etc. High quality cytokine antibodies and proteins are also available with competitive price.

Species	Catalog No.	Product Name
Human	EH0002	Human MIP-3 $\beta$ (Macrophage Inflammatory Protein 3 $\beta$ ) ELISA Kit
Human	EH0003	Human CD26(Dipeptidyl peptidase 4) ELISA Kit
Human	EH0005	Human CXCL1(Growth Regulated Oncogene Alpha) ELISA Kit
Human	EH0006	Human CXCL11(C-X-C motif chemokine 11) ELISA Kit
Human	EH0007	Human CXCL7(Platelet basic protein) ELISA Kit
Human	EH0008	Human CXCL9(C-X-C motif chemokine 9) ELISA Kit
Human	EH0009	Human EGF(Epidermal Growth Factor) ELISA Kit
Human	EH0011	Human IL-18(Interleukin 18) ELISA Kit
Human	EH0014	Human M-CSF(Macrophage Colony-Stimulating Factor) ELISA Kit
Human	EH0017	Human MMP-2(Matrix Metalloproteinase 2) ELISA Kit
Human	EH0056	Human CCL13(Monocyte Chemotactic Protein 4) ELISA Kit
Human	EH0057	Human CCL14(Chemokine C-C-Motif Ligand 14) ELISA Kit
Human	EH0058	Human CCL15(C-C motif chemokine 15) ELISA Kit
Human	EH0059	Human CCL16(Chemokine C-C-Motif Ligand 16) ELISA Kit
Human	EH0060	Human CCL17(C-C motif chemokine 17) ELISA Kit
Human	EH0061	Human CCL18(C-C motif chemokine 18) ELISA Kit
Human	EH0063	Human CCL23(C-C motif chemokine 23) ELISA Kit
Human	EH0064	Human CCL24(C-C motif chemokine 24) ELISA Kit
Human	EH0065	Human CCL25(C-C motif chemokine 25) ELISA Kit
Human	EH0066	Human CCL27(C-C motif chemokine 27) ELISA Kit
Human	EH0067	Human CCL4(C-C motif chemokine 4) ELISA Kit
Human	EH0068	Human CCL7(C-C motif chemokine 7) ELISA Kit
Human	EH0069	Human CCL8(C-C motif chemokine 8) ELISA Kit
Human	EH0072	Human CD13(Aminopeptidase N) ELISA Kit
Human	EH0073	Human CD147(Extracellular Matrix Metalloproteinase Inducer) ELISA Kit
Human	EH0075	Human sCD163(Soluble Cluster of Differentiation 163) ELISA Kit
Human	EH0076	Human CD169(Sialic Acid Binding Ig Like Lectin 1) ELISA Kit
Human	EH0077	Human CD200(OX-2 membrane glycoprotein) ELISA Kit
Human	EH0078	Human CD21(Complement Receptor 2) ELISA Kit
Human	EH0079	Human CD23(Receptor II for the Fc Region of Immunoglobulin E) ELISA Kit
Human	EH0081	Human CD25(Interleukin 2 Receptor Alpha) ELISA Kit

Species	Catalog No.	Product Name
Human	EH0083	Human CD32(Receptor II for the Fc Fragment of IgG) ELISA Kit
Human	EH0088	Human CD80(T-lymphocyte activation antigen CD80) ELISA Kit
Human	EH0089	Human CD93(Complement component C1q receptor) ELISA Kit
Human	EH0102	Human CXCL10(Interferon Gamma Induced Protein 10kDa) ELISA Kit
Human	EH0103	Human CXCL13(C-X-C motif chemokine 13) ELISA Kit
Human	EH0105	Human CXCL16(Chemokine C-X-C-Motif Ligand 16) ELISA Kit
Human	EH0106	Human CXCL5(Epithelial Neutrophil Activating Peptide 78) ELISA Kit
Human	EH0107	Human CXCL6(C-X-C motif chemokine 6) ELISA Kit
Human	EH0121	Human CCL11(Eotaxin) ELISA Kit
Human	EH0130	Human FGF21(Fibroblast growth factor 21) ELISA Kit
Human	EH0131	Human FGF4(Fibroblast growth factor 4) ELISA Kit
Human	EH0132	Human FGF7(Fibroblast growth factor 7) ELISA Kit
Human	EH0133	Human FGF9(Fibroblast growth factor 9) ELISA Kit
Human	EH0139	Human PDGF-AB(Platelet-Derived Growth Factor AB) ELISA Kit
Human	EH0141	Human Fractalkine(Chemokine C-X3-C-Motif Ligand 1) ELISA Kit
Human	EH0149	Human G-CSF(Granulocyte Colony Stimulating Factor 3) ELISA Kit
Human	EH0153	Human GM-CSF(Granulocyte Macrophage Colony Stimulating Factor) ELISA Kit
Human	EH0164	Human IFN- $\gamma$ (Interferon gamma) ELISA Kit
Human	EH0173	Human IL-10(Interleukin 10) ELISA Kit
Human	EH0174	Human IL-11(Interleukin 11) ELISA Kit
Human	EH0175	Human IL-12(p40)(Interleukin 12 p40) ELISA Kit
Human	EH0176	Human IL-12(Interleukin 12) ELISA Kit
Human	EH0177	Human IL-15(Interleukin 15) ELISA Kit
Human	EH0178	Human IL-16(Interleukin 16) ELISA Kit
Human	EH0180	Human IL-17E/IL-25(Interleukin 25) ELISA Kit
Human	EH0184	Human IL-1 $\alpha$ (Interleukin 1 Alpha) ELISA Kit
Human	EH0185	Human IL-1 $\beta$ (Interleukin 1 Beta) ELISA Kit
Human	EH0189	Human IL-2(Interleukin 2) ELISA Kit
Human	EH0190	Human IL-20(Interleukin 20) ELISA Kit
Human	EH0191	Human IL-22(Interleukin-22) ELISA Kit
Human	EH0192	Human IL-24(Interleukin 24) ELISA Kit
Human	EH0193	Human IL-27(Interleukin-27 subunit alpha) ELISA Kit
Human	EH0194	Human IL-28A(Interleukin-28A) ELISA Kit

Species	Catalog No.	Product Name
Human	EH0195	Human IL-29(Interleukin 29) ELISA Kit
Human	EH0196	Human IL-3(Interleukin 3) ELISA Kit
Human	EH0197	Human IL-31(Interleukin-31) ELISA Kit
Human	EH0198	Human IL-33(Interleukin-33) ELISA Kit
Human	EH0199	Human IL-4(Interleukin 4) ELISA Kit
Human	EH0200	Human IL-5(Interleukin 5) ELISA Kit
Human	EH0201	Human IL-6(Interleukin 6) ELISA Kit
Human	EH0203	Human IL-7(Interleukin 7) ELISA Kit
Human	EH0205	Human IL-8(Interleukin 8) ELISA Kit
Human	EH0222	Human MCP-1(Monocyte Chemotactic Protein 1) ELISA Kit
Human	EH0232	Human MMP-1(Matrix Metalloproteinase 1) ELISA Kit
Human	EH0235	Human MMP-3(Matrix Metalloproteinase 3) ELISA Kit
Human	EH0238	Human MMP-9(Matrix Metalloproteinase 9) ELISA Kit
Human	EH0284	Human TGF- $\alpha$ (Transforming Growth Factor $\alpha$ ) ELISA Kit
Human	EH0287	Human TGF- $\beta$ 1(Transforming Growth Factor Beta 1) ELISA Kit
Human	EH0302	Human TNF- $\alpha$ (Tumor Necrosis Factor Alpha) ELISA Kit
Human	EH0303	Human TNF- $\beta$ (Tumor Necrosis Factor Beta) ELISA Kit
Human	EH0327	Human VEGF(Vascular Endothelial Cell Growth Factor) ELISA Kit
Human	EH0357	Human EPO(Erythropoietin) ELISA Kit
Human	EH0369	Human MMP14(Matrix metalloproteinase-14) ELISA Kit
Human	EH0422	Human TPO(Thrombopoietin) ELISA Kit
Human	EH0466	Human CD2(T-cell surface antigen CD2) ELISA Kit
Human	EH0467	Human CD99(Cluster of Differentiation 99) ELISA Kit
Human	EH0485	Human IFN- $\beta$ (Interferon beta) ELISA Kit
Human	EH0628	Human IL36G(Interleukin-36 gamma) ELISA Kit
Human	EH0634	Human CD276(CD276 antigen) ELISA Kit
Human	EH0653	Human CD28(T-cell-specific surface glycoprotein CD28) ELISA Kit
Human	EH0654	Human CD44(CD44 antigen) ELISA Kit
Human	EH0659	Human CD86(T-lymphocyte activation antigen CD86) ELISA Kit
Human	EH0675	Human CCL28(C-C motif chemokine 28) ELISA Kit
Human	EH0710	Human FGF6(Fibroblast growth factor 6) ELISA Kit
Human	EH0717	Human IL9(Interleukin-9) ELISA Kit
Human	EH2210	Human CD68(Macrosialin) ELISA Kit

Species	Catalog No.	Product Name
Mouse	EM0093	Mouse IFN- $\gamma$ (Interferon Gamma) ELISA Kit
Mouse	EM0100	Mouse IL-10(Interleukin-10) ELISA Kit
Mouse	EM0103	Mouse IL-13(Interleukin 13) ELISA Kit
Mouse	EM0108	Mouse IL-1 $\alpha$ (Interleukin 1 Alpha) ELISA Kit
Mouse	EM0109	Mouse IL-1 $\beta$ (Interleukin 1 Beta) ELISA Kit
Mouse	EM0112	Mouse IL-2(Interleukin 2) ELISA Kit
Mouse	EM0113	Mouse IL-21(Interleukin 21) ELISA Kit
Mouse	EM0114	Mouse IL-23(Interleukin 23) ELISA Kit
Mouse	EM0116	Mouse IL-3(Interleukin 3) ELISA Kit
Mouse	EM0118	Mouse IL-33(Interleukin 33) ELISA Kit
Mouse	EM0119	Mouse IL-4(Interleukin 4) ELISA Kit
Mouse	EM0120	Mouse IL-5(Interleukin 5) ELISA Kit
Mouse	EM0121	Mouse IL-6(Interleukin 6) ELISA Kit
Mouse	EM0122	Mouse IL-7(Interleukin 7) ELISA Kit
Mouse	EM0135	Mouse MCP-1(Monocyte Chemotactic Protein 1) ELISA Kit
Mouse	EM0137	Mouse MDC/CCL22(Macrophage-Derived Chemokine) ELISA Kit
Mouse	EM0141	Mouse MMP-12(Matrix Metalloproteinase 12) ELISA Kit
Mouse	EM0142	Mouse MMP-2(Matrix Metalloproteinase 2) ELISA Kit
Mouse	EM0143	Mouse MMP-3(Matrix Metalloproteinase 3) ELISA Kit
Mouse	EM0144	Mouse MMP-9(Matrix Metalloproteinase 9) ELISA Kit
Mouse	EM0171	Mouse SCF(Stem Cell Factor) ELISA Kit
Mouse	EM0176	Mouse TGF- $\beta$ 1(Transforming Growth Factor $\beta$ 1) ELISA Kit
Mouse	EM0177	Mouse TGF- $\beta$ 2(Transforming Growth Factor $\beta$ 2) ELISA Kit
Mouse	EM0178	Mouse TGF- $\beta$ 3(Transforming Growth Factor $\beta$ 3) ELISA Kit
Mouse	EM0182	Mouse TLR2(Toll-like receptor 2) ELISA Kit
Mouse	EM0183	Mouse TNF- $\alpha$ (Tumor Necrosis Factor Alpha) ELISA Kit
Mouse	EM0198	Mouse TPO(Thrombopoietin) ELISA Kit
Mouse	EM0205	Mouse VEGF(Vascular Endothelial cell Growth Factor) ELISA Kit
Mouse	EM0241	Mouse MMP-7(Matrix Metalloproteinase 7) ELISA Kit
Mouse	EM0242	Mouse MMP-8(Matrix Metalloproteinase 8) ELISA Kit
Mouse	EM1146	Mouse IFN- $\alpha$ (Interferon $\alpha$ ) ELISA Kit
Mouse	EM1148	Mouse IFN- $\beta$ (Interferon Beta) ELISA Kit
Mouse	EM1156	Mouse IL-15(Interleukin 15) ELISA Kit

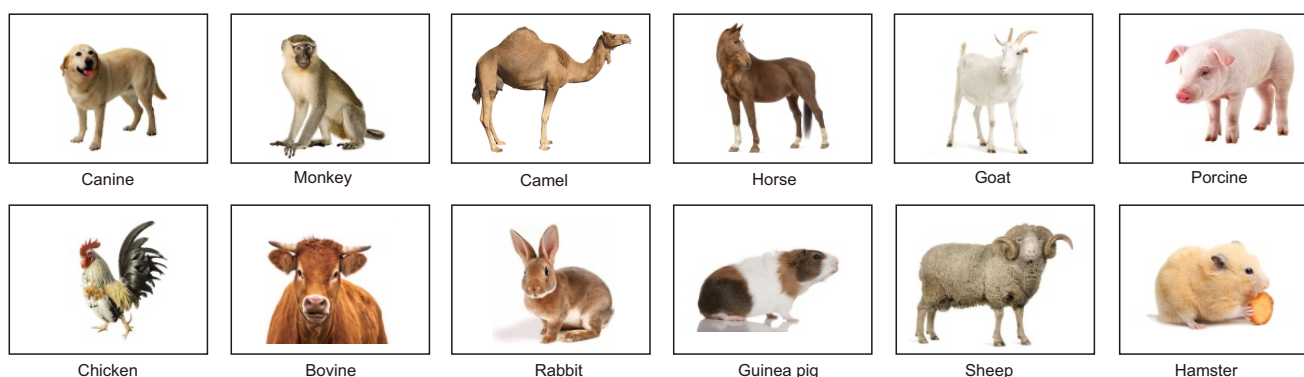


Species	Catalog No.	Product Name
Mouse	EM1157	Mouse IL-16(Interleukin 16) ELISA Kit
Mouse	EM1158	Mouse IL-18(Interleukin 18) ELISA Kit
Mouse	EM1161	Mouse IL-24(Interleukin 24) ELISA Kit
Mouse	EM1162	Mouse IL-25(Interleukin 25) ELISA Kit
Mouse	EM1167	Mouse IL-34(Interleukin 34) ELISA Kit
Mouse	EM1168	Mouse IL-35(Interleukin 35) ELISA Kit
Mouse	EM1169	Mouse IL-9(Interleukin 9) ELISA Kit
Mouse	EM1203	Mouse MCP-2(Monocyte Chemotactic Protein 2) ELISA Kit
Mouse	EM1204	Mouse MCP-3(Monocyte Chemotactic Protein 3) ELISA Kit
Mouse	EM1208	Mouse MIP-1 $\alpha$ (Macrophage Inflammatory Protein 1 Alpha) ELISA Kit
Mouse	EM1209	Mouse MIP-1 $\beta$ (Macrophage Inflammatory Protein 1 Beta) ELISA Kit
Mouse	EM1210	Mouse MIP-3 $\alpha$ (Macrophage Inflammatory Protein 3 Alpha) ELISA Kit
Mouse	EM1213	Mouse MMP-1(Matrix Metalloproteinase 1) ELISA Kit
Mouse	EM1344	Mouse sCD100(soluble Cluster of differentiation 100) ELISA Kit
Mouse	EM1345	Mouse sCD146(Soluble Cluster of Differentiation 146) ELISA Kit
Mouse	EM1405	Mouse TGF- $\alpha$ (Transforming Growth Factor $\alpha$ ) ELISA Kit
Rat	ER1086	Rat IL-12(Interleukin 12) ELISA Kit
Rat	ER1087	Rat IL-12/p40(Interleukin 12 p40) ELISA Kit
Rat	ER1089	Rat IL-16(Interleukin 16) ELISA Kit
Rat	ER1093	Rat IL-1 $\alpha$ (Interleukin 1 Alpha) ELISA Kit
Rat	ER1094	Rat IL-1 $\beta$ (Interleukin 1 Beta) ELISA Kit
Rat	ER1096	Rat IL-23(Interleukin 23) ELISA Kit
Rat	ER1097	Rat IL-25(Interleukin 25) ELISA Kit
Rat	ER1098	Rat IL-27(Interleukin 27) ELISA Kit
Rat	ER1107	Rat IL-9(Interleukin 9) ELISA Kit
Rat	ER1158	Rat MMP-1(Matrix Metalloproteinase 1) ELISA Kit
Rat	ER1159	Rat MMP-10(Matrix Metalloproteinase 10) ELISA Kit
Rat	ER1160	Rat MMP-12(Matrix Metalloproteinase 12) ELISA Kit
Rat	ER1161	Rat MMP-13(Matrix Metalloproteinase 13) ELISA Kit
Rat	ER1162	Rat MMP-17(Matrix Metalloproteinase 17) ELISA Kit
Rat	ER1164	Rat MMP-3(Matrix Metalloproteinase 3) ELISA Kit
Rat	ER1165	Rat MMP-7(Matrix Metalloproteinase-7) ELISA Kit
Rat	ER1166	Rat MMP-8(Matrix Metalloproteinase-8) ELISA Kit

Species	Catalog No.	Description
Rat	ER0033	Rat IL-10(Interleukin-10) ELISA Kit
Rat	ER0034	Rat IL-13(Interleukin-13) ELISA Kit
Rat	ER0035	Rat IL-17(Interleukin-17) ELISA Kit
Rat	ER0036	Rat IL-18(Interleukin-18) ELISA Kit
Rat	ER0039	Rat IL-2(Interleukin-2) ELISA Kit
Rat	ER0040	Rat IL-3(Interleukin-3) ELISA Kit
Rat	ER0041	Rat IL-4(Interleukin-4) ELISA Kit
Rat	ER0042	Rat IL-6(Interleukin-6) ELISA Kit
Rat	ER0047	Rat MCP-1(Monocyte Chemotactic Protein 1) ELISA Kit
Rat	ER0048	Rat MCP-3(Monocyte Chemotactic Protein 3) ELISA Kit
Rat	ER0049	Rat MIP-1 $\alpha$ /CCL3(Macrophage Inflammatory Protein 1 Alpha) ELISA Kit
Rat	ER0050	Rat MIP-3 $\alpha$ (Macrophage Inflammatory Protein 3 Alpha) ELISA Kit
Rat	ER0051	Rat MMP-2(Matrix Metalloproteinase 2) ELISA Kit
Rat	ER0056	Rat PDGF-AB(Platelet-Derived Growth Factor AB) ELISA Kit
Rat	ER0062	Rat TGF- $\beta$ 2(Transforming Growth Factor Beta 2) ELISA Kit
Rat	ER0063	Rat TGF- $\beta$ 3(Transforming Growth Factor Beta 3) ELISA Kit
Rat	ER0069	Rat VEGF(Vascular Endothelial cell Growth Factor) ELISA Kit
Rat	ER0085	Rat VEGF-B(Vascular Endothelial Cell Growth Factor B) ELISA Kit
Rat	ER0093	Rat IL-11(Interleukin-11) ELISA Kit
Rat	ER0107	Rat IL-15(Interleukin-15) ELISA Kit
Rat	ER0114	Rat IL-5(Interleukin-5) ELISA Kit
Rat	ER0126	Rat TGF- $\alpha$ (Transforming Growth Factor Alpha) ELISA Kit
Rat	ER0136	Rat IL-23 $\alpha$ (Interleukin-23 subunit alpha) ELISA Kit
Rat	ER0139	Rat MMP-9(Matrix Metalloproteinase-9) ELISA Kit
Rat	ER0145	Rat PDGFB(Platelet-derived growth factor subunit B) ELISA Kit
Rat	ER0146	Rat IL-7(Interleukin-7) ELISA Kit
Rat	ER0147	Rat FGF23(Fibroblast growth factor 23) ELISA Kit
Rat	ER0161	Rat IL-21(Interleukin-21) ELISA Kit
Rat	ER0165	Rat IL24(Interleukin-24) ELISA Kit
Rat	ER0170	Rat Epo(Erythropoietin) ELISA Kit
Rat	ER0173	Rat FGF7(Fibroblast Growth Factor 7) ELISA Kit
Rat	ER0198	Rat Ccl11(Eosinophil Chemotactic Factor) ELISA Kit
Rat	ER0202	Rat TPO(Thrombopoietin) ELISA Kit

## Veterinary ELISA Kits

FineTest® offers a wide range of over 1,000 veterinary ELISA Kits. The veterinary science kits contribute to the zoological research and are designed to detect and analyze various animal samples. These validated species-specific ELISA Kits help researchers to conduct the bioassay for animal models used in research



Species	Catalog No.	Description
Bovine	EB0004	Bovine PSPB (Pregnancy Specific Protein B) ELISA Kit
Bovine	EB0005	Bovine PISD (Phosphatidylserine decarboxylase proenzyme) ELISA Kit
Bovine	EB0006	Bovine LIF (Leukemia inhibitory factor) ELISA Kit
Bovine	EB0007	Bovine IL-8 (Interleukin 8) ELISA Kit
Bovine	EB0008	Bovine TNF- $\alpha$ (Tumor necrosis factor alpha) ELISA Kit
Bovine	EB0009	Bovine CRP (C-Reactive Protein) ELISA Kit
Bovine	EB0010	Bovine TGF- $\beta$ (Transforming Growth Factor Beta) ELISA Kit
Bovine	EB0011	Bovine HP (Haptoglobin) ELISA Kit
Bovine	EB0013	Bovine PRL (Prolactin) ELISA Kit
Bovine	EB0014	Bovine P21 (Cyclin-dependent Kinase Inhibitor 1A) ELISA Kit
Canine	ECA0001	Canine ADORA1 (Adenosine A1 Receptor) ELISA Kit
Canine	ECA0002	Canine ADP/Acrp30 (Adiponectin) ELISA Kit
Canine	ECA0003	Canine BNP (Brain Natriuretic Peptide) ELISA Kit
Canine	ECA0004	Canine C3 (Complement 3) ELISA Kit
Canine	ECA0005	Canine CKMB (Creatine Kinase MB Isoenzyme) ELISA Kit
Canine	ECA0006	Canine CRP (C-Reactive Protein) ELISA Kit
Canine	ECA0007	Canine Fbg (Fibrinogen) ELISA Kit
Canine	ECA0008	Canine HP (Haptoglobulin) ELISA Kit
Canine	ECA0010	Canine IgE (Immunoglobulin E) ELISA Kit
Chicken	ECH0002	Chicken ADP/Acrp30 (Adiponectin) ELISA Kit
Chicken	ECH0006	Chicken ANXA5 (Annexin A5) ELISA Kit
Chicken	ECH0009	Chicken bFGF/FGF2 (Basic Fibroblast Growth Factor) ELISA Kit
Chicken	ECH0010	Chicken BMP-2 (Bone Morphogenetic Protein 2) ELISA Kit
Chicken	ECH0011	Chicken BMP-4 (Bone Morphogenetic Protein 4) ELISA Kit

Species	Catalog No.	Description
Chicken	ECH0012	Chicken C3 (Complement Component 3) ELISA Kit
Chicken	ECH0014	Chicken CD40L/TNFSF5 (Cluster of Differentiation 40 Ligand) ELISA Kit
Chicken	ECH0015	Chicken CNTF (Ciliary Neurotrophic Factor) ELISA Kit
Goat	EG0001	Goat IgG (Immunoglobulin G) ELISA Kit
Goat	EG0002	Goat IGF-1 (Insulin-like growth factor 1) ELISA Kit
Goat	EG0004	Goat IgA (Immunoglobulin A) ELISA Kit
Goat	EG0005	Goat IgM (Immunoglobulin M) ELISA Kit
Goat	EG0007	Goat SAA (Serum amyloid A) ELISA Kit
Goat	EG0027	Goat ALB (Albumin) ELISA Kit
Goat	EG0006	Goat IFN- $\gamma$ (Interferon Gamma) ELISA Kit
Monkey	EMK0001	Monkey ACE (Angiotensin I Converting Enzyme) ELISA Kit
Monkey	EMK0002	Monkey ADIPOR1 (Adiponectin Receptor 1) ELISA Kit
Monkey	EMK0003	Monkey ADP/Acrp30 (Adiponectin) ELISA Kit
Monkey	EMK0004	Monkey AMBP (Alpha-1-Microglobulin/Bikunin Precursor) ELISA Kit
Monkey	EMK0005	Monkey ANXA5 (Annexin A5) ELISA Kit
Monkey	EMK0006	Monkey ApoA1 (Apolipoprotein A1) ELISA Kit
Monkey	EMK0007	Monkey ApoB100 (Apolipoprotein B100) ELISA Kit
Monkey	EMK0008	Monkey ApoC3 (Apolipoprotein C3) ELISA Kit
Monkey	EMK0009	Monkey ApoE (Apolipoprotein E) ELISA Kit
Monkey	EMK0010	Monkey C3 (Complement Component 3) ELISA Kit
Monkey	EMK0011	Monkey C4 (Complement Component 4) ELISA Kit
Monkey	EMK0012	Monkey C5a (Complement Component 5a) ELISA Kit
Porcine	EP0003	Porcine ACTH (Adrenocorticotrophic Hormone) ELISA Kit
Porcine	EP0006	Porcine ADP/Acrp30 (Adiponectin) ELISA Kit
Porcine	EP0009	Porcine ALP (Alkaline Phosphatase) ELISA Kit
Porcine	EP0011	Porcine ANG (Angiogenin) ELISA Kit
Porcine	EP0012	Porcine ANG2 (Angiopoietin 2) ELISA Kit
Porcine	EP0013	Porcine ANP (Atrial Natriuretic Peptide) ELISA Kit
Porcine	EP0014	Porcine ApoA1 (Apolipoprotein A1) ELISA Kit
Porcine	EP0016	Porcine ApoA4 (Apolipoprotein A4) ELISA Kit
Porcine	EP0017	Porcine ApoB (Apolipoprotein B) ELISA Kit
Rabbit	ERB0005	Rabbit ALP (Alkaline Phosphatase) ELISA Kit
Rabbit	ERB0006	Rabbit ANG II (Angiotensin II) ELISA Kit
Rabbit	ERB0007	Rabbit ANG2 (Angiopoietin 2) ELISA Kit
Rabbit	ERB0008	Rabbit ANP (Atrial Natriuretic Peptide) ELISA Kit
Rabbit	ERB0009	Rabbit ApoA1 (Apolipoprotein A1) ELISA Kit
Rabbit	ERB0010	Rabbit ApoB100 (Apolipoprotein B100) ELISA Kit
Rabbit	ERB0011	Rabbit ApoB48 (Apolipoprotein B48) ELISA Kit
Rabbit	ERB0012	Rabbit ApoC1 (Apolipoprotein C1) ELISA Kit
Rabbit	ERB0013	Rabbit ApoD (Apolipoprotein D) ELISA Kit
Sheep	ESH0001	Sheep ACE (Angiotensin I Converting Enzyme) ELISA Kit
Sheep	ESH0004	Sheep C3a (Complement Component 3a) ELISA Kit
Sheep	ESH0007	Sheep IFN- $\gamma$ (Interferon Gamma) ELISA Kit
Sheep	ESH0008	Sheep IgG1 (Immunoglobulin G1) ELISA Kit
Sheep	ESH0009	Sheep IL-10 (Interleukin-10) ELISA Kit
Sheep	ESH0010	Sheep IL-12 (Interleukin 12) ELISA Kit
Sheep	ESH0011	Sheep IL-12 p40 (Interleukin 12 p40) ELISA Kit
Sheep	ESH0012	Sheep IL-1 $\beta$ (Interleukin 1 Beta) ELISA Kit
Sheep	ESH0013	Sheep IL-2 (Interleukin 2) ELISA Kit
Sheep	ESH0014	Sheep IL-23 (Interleukin 23) ELISA Kit

# Accquant® ELISA Kits

## Limited sample?

So low target protein concentration that your ELISA Kits fail to detect?

FineTest® Launches the high sensitive Accquant® ELISA Kits recently. By using a newly developed assay dilution, Accquant® ELISA Kits not only reduce half sample requirement but also increase the specific antibody-target protein binding which result in highly improved Kits sensitivity.

**50%**  
sample loading

**10** times  
improved sensitivity

Catalog No.	Description	Range
AQ-H0201	Human HS-IL-6(High sensitive Interleukin 6) Accquant® ELISA Kit	0.46-30pg/ml
AQ-U3128	COVID-19 Spike Protein Accquant® ELISA Kit	0.78-50pg/ml
AQ-H0201-B	Human HS-IL-6(High sensitive Interleukin 6) Accquant® ELISA Kit	0.078-5pg/ml
AQ-M0121-B	Mouse HS-IL-6(High sensitive Interleukin 6) Accquant® ELISA Kit	6.25-400pg/ml
AQ-H0302-B	Human HS-TNF- $\alpha$ (High sensitive Tumor Necrosis Factor Alpha) Accquant® ELISA Kit	3.1-200pg/ml
AQ-H0205-B	Human HS-IL-8(High sensitive Interleukin 8) Accquant® ELISA Kit	0.78-50pg/ml
AQ-H0164-B	Human HS-IFN- $\gamma$ (High sensitive Interferon gamma) Accquant® ELISA Kit	2.34-150pg/ml
AQ-H0176-B	Human HS-IL-12 p70(High sensitive Interleukin 12 p70) Accquant® ELISA Kit	7.8-500pg/ml
AQ-H0177-B	Human HS-IL-15(High sensitive Interleukin 15) Accquant® ELISA Kit	0.31-20pg/ml
AQ-H3267-B	Human HS-IL-17(High sensitive Interleukin 17) Accquant® ELISA Kit	6.25-400pg/ml
AQ-H0198-B	Human HS-IL-33(High sensitive Interleukin 33) Accquant® ELISA Kit	3.1-200pg/ml
AQ-H0011-B	Human HS-IL-18(High sensitive Interleukin 18) Accquant® ELISA Kit	1.563-100pg/ml
AQ-MK0030-B	Monkey IFN- $\gamma$ (Interferon Gamma)ELISA Kit	6.25-400pg/ml
AQ-M0119-B	Mouse HS-IL-4 (High sensitive Interleukin 4) Accquant® ELISA Kit	0.78-50pg/ml

## HCPs Residue Detection ELISA Kits

Host cell proteins (HCPs) refer to proteins derived from host cells during the production of a cell line. Studies showed that HCPs can stimulate human immune system, causing allergic reactions or other adverse reactions. In addition, HCPs may also trigger the body to produce antibodies against protein drugs, affecting the therapeutic effect of the drugs.

Therefore, drug quality supervision agencies around the world have clear requirements for residual HCPs. ELISA assay has a detection sensitivity for HCPs of up to 0.5ng/ml, which is 200 times higher than CIE with advantages such as good reproducibility, high efficiency, easy operation and wide applications. It is currently recognized as the preferred method for detecting residual HCPs.

To meet customers' demands for residual host protein detection, FineTest® has developed corresponding ELISA Kits and can also customize HCP assay kits.

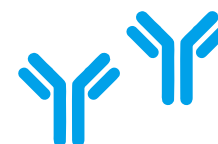


Catalog No.	Description	Range
EMK0179	VERO HCPs (VERO host cell proteins) ELISA Kit	0.313-20ng/ml
EU2624	E.coli HCPs(E.coli host cell proteins) ELISA Kit	3.125-200ng/ml
EU2614	CHO HCPs (Chinese Hamster Ovary host cell proteins) ELISA Kit	0.313-20ng/ml
EU3135	OVA(Ovalbumin) ELISA Kit	0.781-50ng/ml
EU3133	PEA(Pseudomonas Exotoxin A) ELISA Kit	31.25-2000pg/ml
EH4435-CM	HEK 293 HCPs(HEK 293 host cell proteins) ELISA Kit	78.125-5000ng/ml
EU3126	LPS(Lipopolysaccharides) ELISA Kit	0.313-20ug/ml
EP0253	Porcine TRY(Trypsin) ELISA Kit	1.563-100ng/ml
EB0148	Bovine serum albumin(BSA) ELISA Kit	0.156-10ug/ml

## Antibodies

FineTest® have 12,000+ antibodies with validated images available for applications like ELISA, WB, IHC, FC...etc, including rabbit polyclonal & mouse monoclonal primary antibodies and various tagged secondary antibodies such as HRP, FITC, Biotin...etc.

- ◆ 12000+ Options
- ◆ Image-based Validation
- ◆ Polyclonal & Monoclonal
- ◆ High Specificity and Sensitivity
- ◆ Different Tags
- ◆ Accept Custom Antibodies



## Loading Control Antibodies

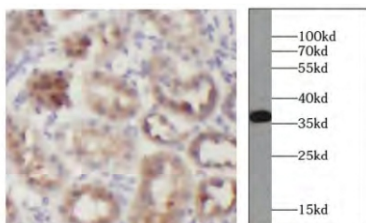
FineTest® provides a complete set of polyclonal and monoclonal loading control antibodies with high specificity and wide applications, which can be used in most qualitative, quantitative and localization analysis of proteins. We provide common and rare species loading control antibodies(e.g.human, mouse, rat etc) as well as custom services.

### anti-GAPDH antibody

Cat NO.:FNab03343

Species reactivity: Human, Mouse, Rat, Zebrafish

Application: ELISA, IHC, WB, IF, FC, IP



Human kidney tissue

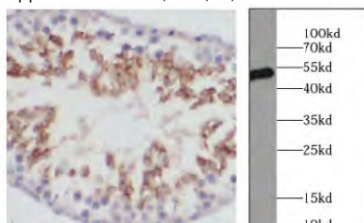
hela cell lysate

### anti- alpha Tubulin antibody

Cat NO.:FNab00334

Species reactivity: Human, Mouse, Rat

Application:ELISA, IHC, IF, WB



human testis tissue

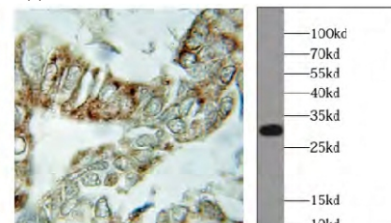
hela cell lysate

### anti-VDAC1/Porin antibody

Cat NO.:FNab09385

Species reactivity:Human, Mouse

Application:ELISA, WB, IHC, IF



Human pancreatic cancer tissue

HEK-293 cell lysate

## Why choose FineTest® loading control antibodies?

A complete set of loading control antibodies with wide molecular weight range from 15kDa to 130kDa

Strict QC and various validations, high performance choice accepted by wide customers.

Flexible size for your choice.

Catalogue No.	Product Name	MW(kDa)	Antibody Type	Applications
FNab00869	anti- beta actin antibody	42	Rabbit pAb	ELISA, IF, WB, IHC
FNab00873	anti- beta actin antibody	42	Mouse mAb	ELISA, WB,IHC, IF
FNab03342	anti- GAPDH antibody	36	Rabbit pAb	ELISA, IHC, WB
FNab03343	anti- GAPDH antibody	36	Mouse mAb	ELISA, IHC, WB, IF, FC,IP
FNab00880	anti- Beta Tubulin antibody	50-55	Rabbit pAb	ELISA, WB, IF, IP, IHC, FC
FNab09105	anti- Tubulin-beta antibody	50-55	Mouse mAb	ELISA, WB, IHC, IF, IP

## Tag Antibodies

Recombinant proteins usually own a type of tag after purification. Tag antibodies which can specifically recognize tagged recombinant protein are the efficient tool for studying recombinant protein expression. FineTest® offers various tag antibodies strictly validated in applications like WB, IP, IF, FC etc.

### How to Choose Tag Antibodies



**01**

Choose tag antibodies according to proteins' tag



**02**

Recommend Protein with flag tag for WB



**03**

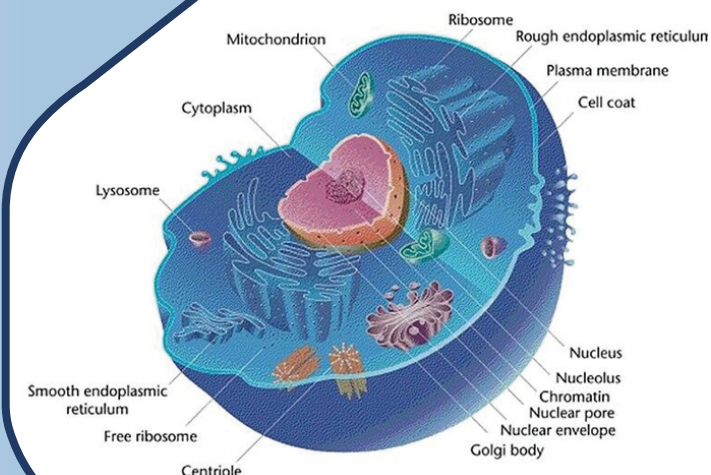
Recommend Protein with flag, HA or cMyc tag for IP

## Recommended Tag Antibodies

Tag Type	Catalogue No.	Applications	Product Name
Flag Tag	FNab03154 FNab03155	ELISA, WB, IF ELISA, WB, IP	anti-Flag tag antibody anti-Flag tag antibody
His Tag	FNab00008 FNab00010	ELISA, WB, IP, IF ELISA. WB	anti-6*His, His-Tag antibody anti-6*his, His tag antibody
HA Tag	FNab03762 FNab03742	ELISA, WB, IP, IF ELISA, IP, WB, IF	anti-HA tag antibody anti-HA-Tag antibody
Myc Tag	FNab05462 FNab05456	ELISA, WB, IP, IF ELISA, WB, IP, IF	anti-MYC tag antibody anti-MYC-tag antibody
GST Tag	FNab03683 FNab03684	ELISA, WB ELISA, WB, IP	anti-GST tag antibody anti-GST Tag antibody
GFP Tag	FNab03433 FNab03434	ELISA, WB, IP ELISA, WB, IP, IF	anti-GFP tag antibody anti-GFP tag antibody
MBP Tag	FNab05042 FNab05043	ELISA, WB, IP ELISA, WB	anti-MBP tag antibody anti-MBP-Tag antibody
S1 Tag	FNab07549	ELISA, WB	anti-S1 tag antibody
V5 tag	FNab09354	ELISA, WB, IP	anti-V5-tag antibody



# Organelle Marker Antibodies



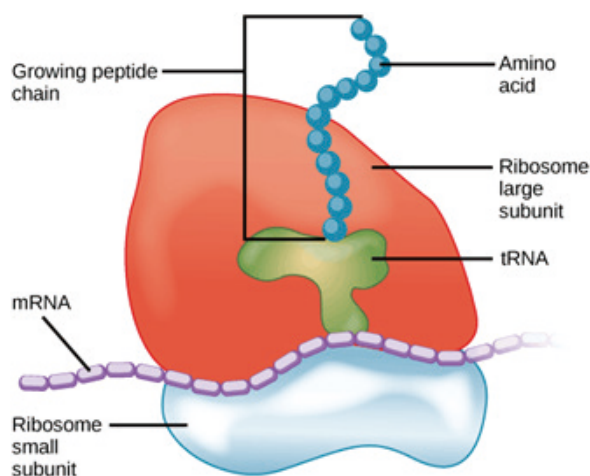
Organelles are the micro-organs which have specific morphology and function in the cytoplasm, mainly including mitochondrion, endoplasmic reticulum, centrosome, chloroplast, ribosome etc. They're the basic cellular structure and maintain the normal working of the cell.

## Ribosome

Ribosome serves as the molecular machine for protein synthesis in the cell. It mainly consists of RNA(rRNA) and protein, and is the exclusive protein synthesis workshop.

Ribosome markers are ribosomal proteins (RP), e.g. RPS3-RPS6, RPL7A etc. Some RP not only have typical ribosome function, but also can activate p53 dependent or independent pathway in stress reaction to result in cell cycle arrest and apoptosis. Recommended antibodies for Ribosome markers are listed below.

Catalog No.	Product Name
FNab07443	anti- RPL7A antibody
FNab07475	anti- RPS3 antibody
FNab07476	anti- RPS3 antibody
FNab07477	anti- RPS3 antibody
FNab07481	anti- RPS5 antibody
FNab07482	anti- RPS6 antibody
FNab07293	anti- RPL4 antibody
FNab07422	anti- RPL23 antibody
FNab07417	anti- RPL18A antibody
FNab07418	anti- RPL18A antibody
FNab07410	anti- RPL11 antibody
FNab07408	anti- RPL10 antibody

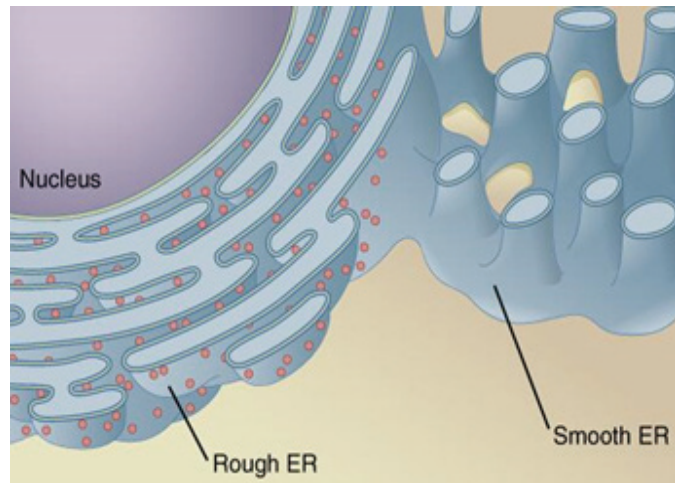


## Endoplasmic Reticulum

Endoplasmic Reticulum(ER) is the single unit membrane formed vesicle-like organelle for protein processing and calcium ion storage. ER is related to many diseases, such as neurodegenerative disorder, diabetes, viral infection diseases and chemical toxicity diseases etc.

ER markers include proteins involved in calcium homeostasis and protein processing, e.g. Calnexin, Calreticulin, chaperone BIP etc. Recommended antibodies for ER markers are listed below.

Catalog No.	Product Name
FNab06272	anti- PDI antibody
FNab09833	anti- PDI antibody
FNab01210	anti- Calnexin antibody
FNab01224	anti- calreticulin antibody
FNab03662	anti- GRP78/BIP antibody
FNab09987	anti- HSPA5 antibody
FNab10492	anti- GRP78/BIP antibody
FNab03937	anti- HMOX1 antibody
FNab03938	anti- HMOX2 antibody
FNab02159	anti- CYP2E1-Specific antibody
FNab02858	anti- ERp57/ERp60 antibody
FNab02859	anti- ERp72 antibody

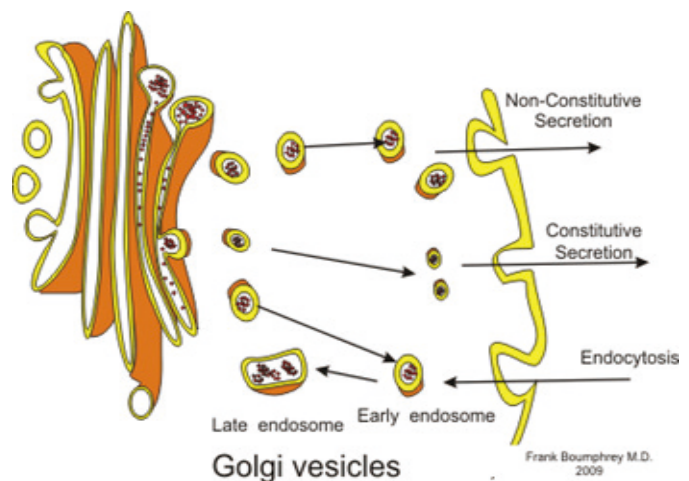


## Golgi Bodies

Golgi bodies consist of many flat vesicles. Secretion is the main function.

The structural and functional disorder of Golgi bodies is the important cause of neurodegenerative disease, and also mediates glycosylated disorder in tumor cell. Common Golgi markers contain GM130, RCAS1 and golgin 97 etc. Golgi matrix consists of GRASPs (GRASP55 and GRASP65) and Golgin protein family, which manages protein transport and accurate glycosylation modification. GM130, Giantin and GOLPH3 are involved in the proper localization of glycosylase in Golgi bodies. Recommended antibodies for Golgi Bodies markers are listed below.

Catalog No.	Product Name
FNab00776	anti- B4GALT6 antibody
FNab07203	anti- RCAS1 antibody
FNab07204	anti- RCAS1 antibody
FNab03560	anti- golgin 97 antibody
FNab03564	anti- GORASP2 antibody
FNab03668	anti- GS28 antibody
FNab03565	anti- GOSR2/Membrin antibody
FNab03566	anti- GOSR2/Membrin antibody
FNab08453	anti- Syntaxin 6 antibody
FNab08454	anti- Syntaxin 6 antibody
FNab08653	anti- TGN46 antibody
FNab03233	anti- FTCD antibody
FNab03558	Anti- GOLGA2/GM130 antibody
FNab03453	anti- Giantin antibody



## Lysosome

Lysosomes are shaped variously and vesicular structures (0.025 to 0.8 micrometers in size) containing numerous hydrolytic enzymes.

Their intracellular function is to break down external substances that have entered the cell, as well as to digest portions of the cell's own cytoplasm or organelles. LAMP1 and LAMP2 are two transmembrane proteins located on the lysosomal membrane and can protect the protein from being hydrolyzed via their amino termini highly glycosylated on the luminal surface of the lysosome. They are commonly used as lysosomal marker proteins.

Catalog No.	Product Name
FNab04684	anti- LAMP1 antibody
FNab04685	anti- LAMP1 antibody
FNab10890	anti- LAMP1 antibody
FNab04686	anti- LAMP2 antibody
FNab09834	anti- LAMP2 antibody

### Three main functions of lysosomes:

#### Endocytosis

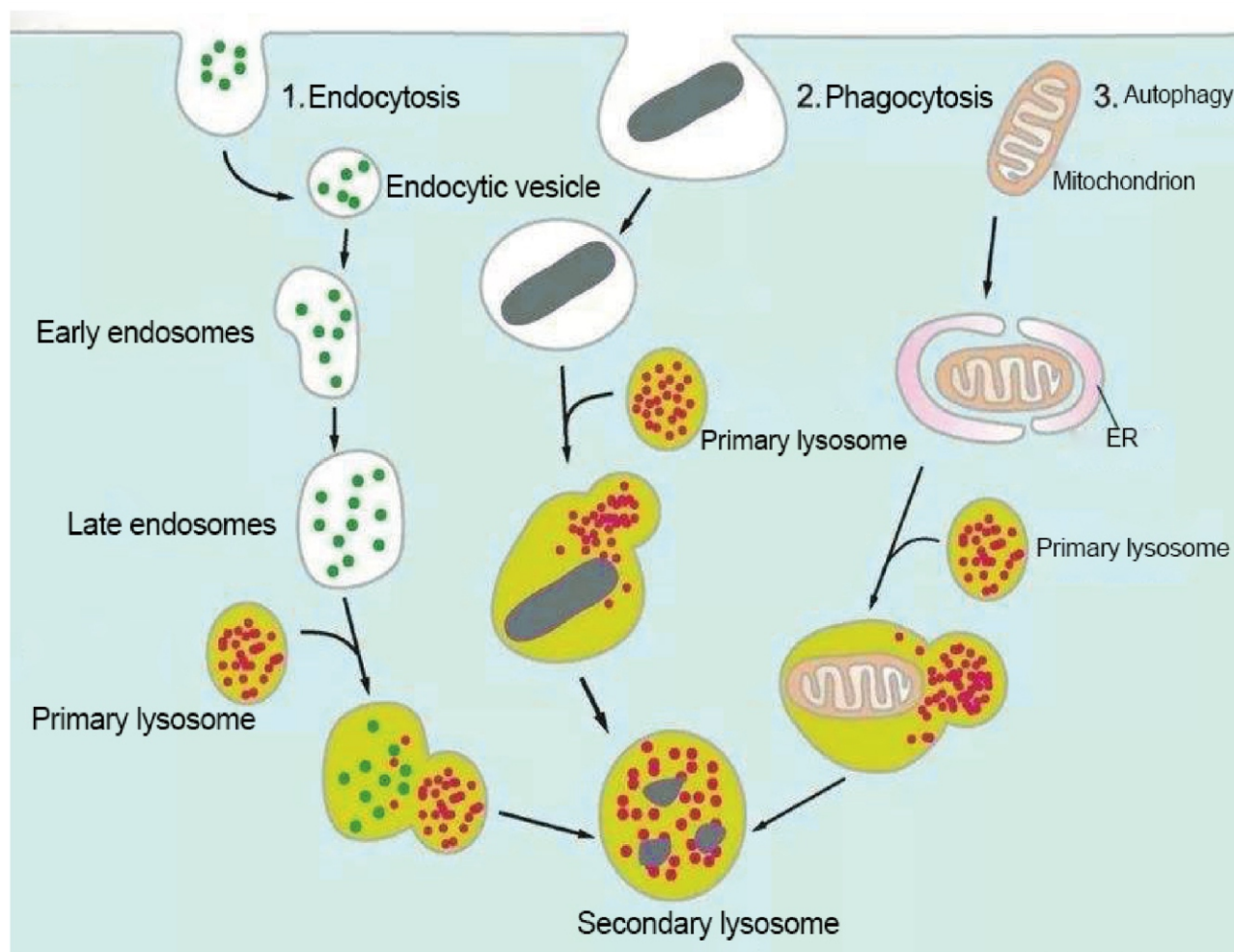
Fuse with food vacuoles to absorb nutrition.

#### Phagocytosis

Phagocytose harmful substances or pathogens from the extracellular environment.

#### Autophagy

Phagocytose aged or damaged organelles and other biologically unnecessary intracellular macromolecules.

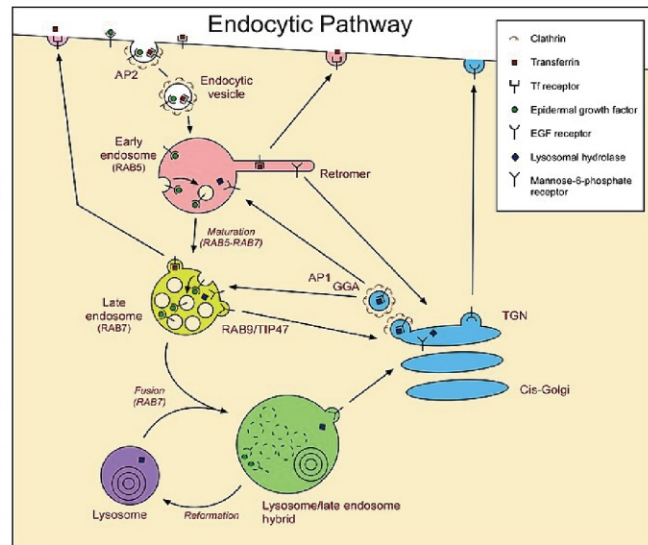


## Endosome

Endosomes are acidic vesicular structures formed by membrane wrapping during endocytosis and don't contain lysosomal enzymes.

There are early endosomes, late endosomes and recycling endosomes based on different stages. While the endocytosis happens, the vesicle will be released. Then vesicle will fuse with early endosomes (markers such as RAB5, RAB4, transferrin and its receptor, and EEA1), and then mature into late endosomes (markers such as RAB7, RAB9, and mannose 6-phosphate receptor), and fuse with lysosomes for degradation or recycling (marker RAB11) back to the cell membrane.

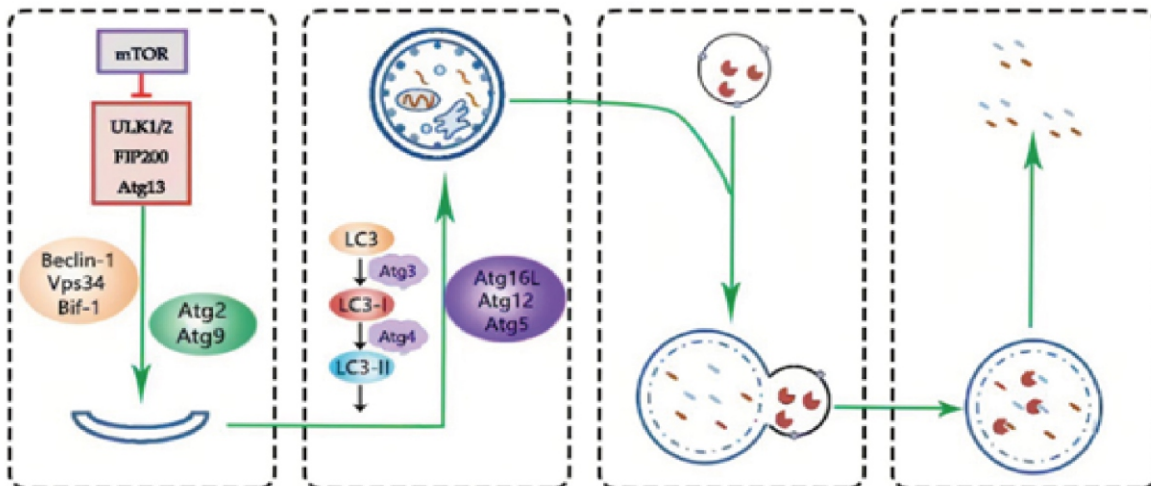
Catalog No.	Product Name
FNab07037	anti- RAB4A antibody
FNab07038	anti- RAB5A antibody
FNab07039	anti- RAB5A-Specific antibody
FNab07043	anti- RAB7A antibody
FNab07048	anti- RAB9A antibody
FNab07049	anti- RAB9A-Specific antibody
FNab06988	anti- RAB11 antibody
FNab06994	anti- RAB11-Specific antibody
FNab01490	anti- CD63 antibody
FNab02639	anti- EEA1 antibody



## Autophagosome

Autophagosome refers to vesicles formed by the membrane (derived from the ER or Golgi complex membrane) wrapping of intracellular components including damaged organelles or excessively stored substances such as glycogen due to physiological or pathological reasons.

Two common markers for autophagosome formation include ATG12 complex which binds to the autophagic vesicles and LC3 protein which associates with the autophagic vesicles to form autophagosomes.



Catalog No.	Product Name
FNab00666	anti- ATG12 antibody
FNab00667	anti- ATG12 antibody
FNab10376	anti- ATG12 antibody
FNab06087	anti- P62/SQSTM1 antibody
FNab06086	anti- P62/SQSTM1 antibody

Catalog No.	Product Name
FNab09853	anti- P62/SQSTM1 antibody
FNab04716	anti- Cleaved LC3 antibody
FNab04717	anti- LC3 antibody
FNab04719	anti- LC3A-Specific antibody
FNab04720	anti- LC3B-Specific antibody

## Secondary Antibodies

FineTest® offers various high-quality conjugated/unconjugated secondary antibodies which can be applied in fluorescence detection of the primary antibody.

Catalog No.	Product Name
FNSA-0003	HRP conjugated Affinipure Goat Anti-Mouse IgG (H+L)
FNSA-0004	HRP conjugated Affinipure Goat Anti-Rabbit IgG (H+L)
FNSA-0020	AP conjugated Affinipure Goat Anti-Mouse IgG (H+L)
FNSA-0021	AP conjugated Affinipure Goat Anti-Rabbit IgG (H+L)
FNSA-0030	FITC conjugated Affinipure Goat Anti Mouse IgG (H+L)
FNSA-0031	FITC conjugated Affinipure Goat Anti Rabbit IgG (H+L)
FNSA-0040	Biotin conjugated Affinipure Goat Anti-Mouse IgG (H+L)
FNSA-0041	Biotin conjugated Affinipure Goat Anti-Rabbit IgG (H+L)
FNSA-0050	Texas Red conjugated Affinipure Goat Anti-Mouse IgG (H+L)
FNSA-0051	Texas Red conjugated Affinipure Goat Anti-Rabbit IgG (H+L)
FNSA-0055	Alexa Fluor 488 conjugated Affinipure Goat Anti-Mouse IgG (H+L)
FNSA-0056	Alexa Fluor 488 conjugated Affinipure Goat Anti-Rabbit IgG (H+L)
FNSA-0065	Rhodamine (TRITC) conjugated Affinipure Goat Anti-Mouse IgG (H+L)
FNSA-0066	Rhodamine (TRITC) conjugated Affinipure Goat Anti-Rabbit IgG (H+L)
FNSA-0077	Cy3 conjugated Affinipure Goat Anti-Mouse IgG (H+L)
FNSA-0078	Cy3 conjugated Affinipure Goat Anti-Rabbit IgG (H+L)
FNSA-0082	AMCA conjugated Affinipure Goat Anti-Mouse IgG (H+L)
FNSA-0083	AMCA conjugated Affinipure Goat Anti-Rabbit IgG (H+L)
FNSA-0060	Alexa Fluor 594 conjugated Affinipure Goat Anti-Mouse IgG (H+L)
FNSA-0061	Alexa Fluor 594 conjugated Affinipure Goat Anti-Rabbit IgG (H+L)
FNSA-0109	Normal Human IgG Control
FNSA-0106	Normal Rabbit IgG Control
FNSA-0130	Normal Mouse IgG Control
FNSA-0131	Chicken IgY-Isotype Control
FNSA-0164	Goat Anti-Human IgG(Fab)

## Isotype Control Antibodies

Isotype Control Antibodies refer to the immunoglobulin sharing the same species, subtype and dose as the primary antibody. It's mainly applied in removing the background signal caused by non-specific binding.

### Applications

**FC:** Isotype control is one of the most commonly used negative controls in Flow Cytometry. It simulates non-specific binding and staining of FcR or other proteins, and also can set the voltage of flow cytometry to efficiently save experimental cost(Figure 1).

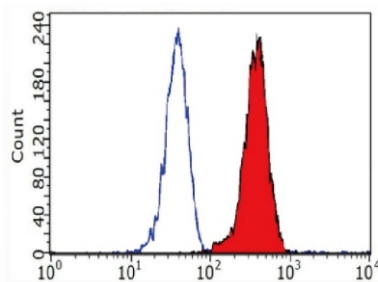


Figure 1. Isotype control signal(blue) is weaker than target antibody signal(Red), showing the antigen-antibody specific binding.

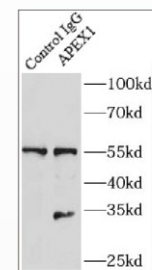


Figure 2. The staining of control group only includes the heavy chain band (55kd) showing the non-specific binding between the antibody and the sample.

**IP:** The isotype control sample can only detect the heavy chain band of the antibody(Figure 2).

**IF and IHC:** The staining signal of isotype control is weaker than specific antibody while reacting with the target protein of the sample(Figure 3).

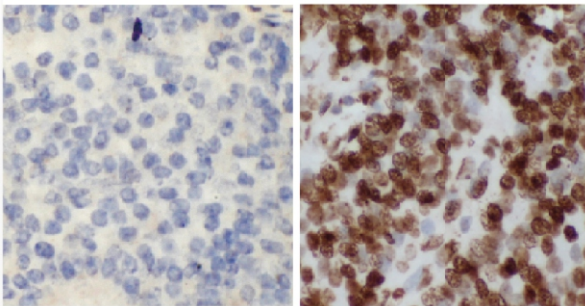


Figure 3. Isotype control is unstained (left). Nucleolus is obviously stained (right), showing the specific staining between antibody and sample.

**ELISA:** When ELISA assay detects the specific antibody, isotype control can exclude non-specific binding.

Catalog No.	Product Name	Species
FNSA-0130	Normal mouse IgG Control	Mouse
FNSA-0131	Chicken IgY-Isotype Control	Chicken
FNSA-0133	Goat IgG-Isotype Control	Goat
FNSA-0134	Rat IgG-Isotype Control	Rat
FNSA-0109	Normal Human IgG Control	Human
FNSA-0106	Normal Rabbit IgG Control	Rabbit

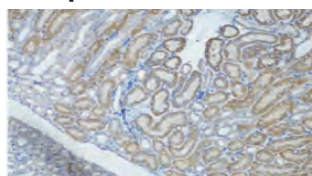
## Poly-HRP Secondary Antibodies

FineTest® adopts a new polymerase-mark system (including Poly-HRP Goat Anti-Rabbit IgG and Poly-HRP Goat Anti-Mouse IgG). More enzymes will bind to the single antibody through the arm structure. Meanwhile, the optimal structure of now system enhances the signal during immunohistochemistry and reduces non-specific reaction as well as simplifies the experimental steps.

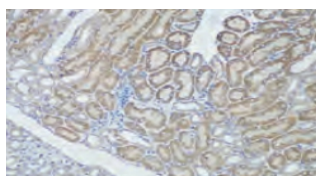
### Comparison between Different Detection Systems

Amplification system	Size	Components	The experimental steps	signal
PAP, APAAP	Very large >5000kd	Anti-HRP-IgG HRP HRP-IgG	1. primary antibody 2. PAP or APAAP	Medium
ABC(SABC)	Large >2000kd	Avidin(StreptAvidin) Biotin-HRP	1. primary antibody 2. biotin-secondary antibody 3. ABC(SABC)	Strong
<b>Poly-HRP-IgG</b>	<b>Medium: 700~1200kd</b>	<b>HRP(multiple)-IgG (secondary antibody)</b>	<b>1. primary antibody 2. secondary antibody</b>	<b>Very strong</b>
HRP-IgG(normal)	Small: 200~282kd	HRP(1-3)-IgG (secondary antibody)	1. primary antibody 2. secondary antibody	Weak or none

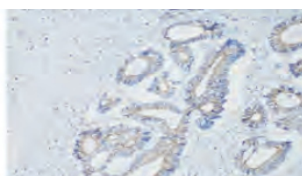
### Compared With Other Brands



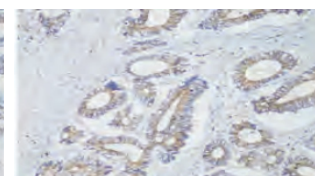
Abcam(ab209101) Poly-HRP Secondary, DAB staining for 1 minute.



FineTest® Poly-HRP Secondary, DAB staining for 1 minute.



Common brand Poly-HRP Secondary from market, SABC staining for 1 minute.



FineTest® Poly-HRP Secondary, DAB staining for 1 minute.

When execute IHC experiment, FineTest® Poly-HRP secondary antibodies got an excellent signal amplification without non-specific reaction and greatly simplified the experimental procedure.

Catalogue No.	Product Name	Tested application
ES-0005	PolyHRP-conjugated Affinipure Goat Anti-Mouse/RabbitIgG (H+L)	IHC, ELISA
ES-0004	Poly HRP-conjugated Affinipure Goat Anti-Rabbit IgG(H+L)	ELISA, WB, IHC
ES-0003	Poly HRP-conjugated Affinipure Goat Anti-Mouse IgG (H+L)	ELISA, WB, IHC
ES-0002	SABC one-component	Elisa
ES-0001	SABC two-component	IHC
IHC0007	Rabbit-DAB(Poly-HRP)Detection IHC Kit	
IHC0008	Mouse-DAB(Poly-HRP) Detection IHC Kit	

# Proteins

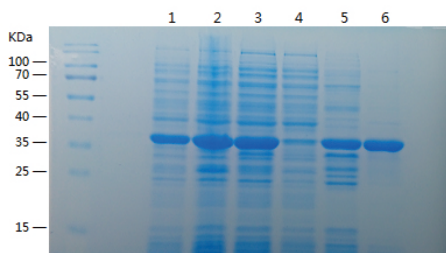
FineTest® protein service provided over 5,000 recombinant proteins expressed by HEK293 and E.Coli for WB, ELISA application. Besides His tag and GST tag, we developed special IF2DI tag with high-efficient solubility which can greatly improve the protein expression. Also we accept custom protein production.



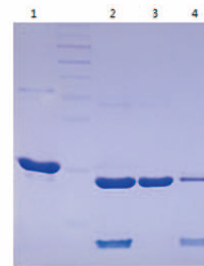
- ◆ Image-based Validation
- ◆ Over 95% Purity
- ◆ E. Coli and HEK Cell Systems
- ◆ Low Endotoxin levels <1 EU/ug
- ◆ Accept Custom Protein

## IF2D Tag

FineTest® develops pET28a-IF2D1 expression vector with the powerful fusion tag, which perfectly replaces GST, MBP etc. Furthermore, the molecular weight is lower and the influence on the expression of target proteins is less. Thrombin functions as the enzyme cutting site to facilitate the subsequent cutting



- 1: Induce whole bacteria
- 2: crushing sediment
- 3: Broken supernatant
- 4: Flow through fluid
- 5: Wash the miscellaneous
- 6: target protein elution:



- 1: Before enzyme digestion
- 2: After enzyme digestion
- 3: De-tag (get the target protein)
- 4: Tag Fragments

## Expression System

Now there are two types of protein expression system: prokaryotic expression system and eukaryotic expression system. Table below shows the difference.

	Prokaryotic System	Eukaryotic System
Advantage	Simple and convenient operation, short expression cycle, low cost	Protein Modification and Protein Modification and processible production
Disadvantage	Unable to process and modify proteins	Long cycle and complex operation
Expression Level	High	Low
Protein Activity	<input type="checkbox"/>	<input checked="" type="checkbox"/>



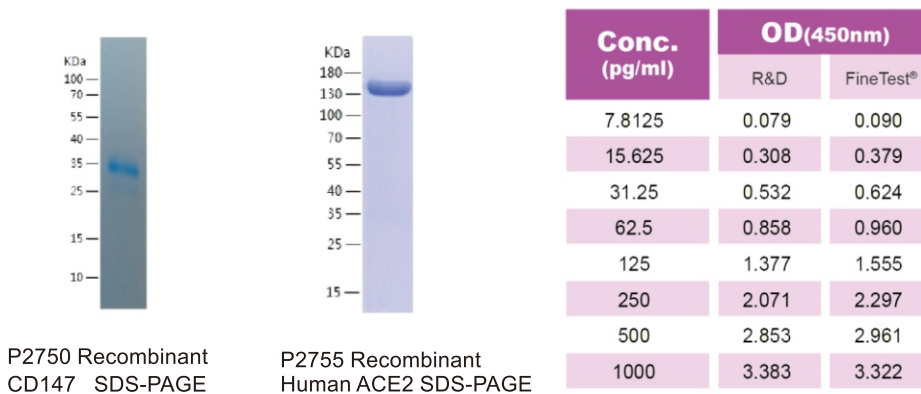
E. coli expression system is a typical prokaryotic expression system that has been widely used in protein expression technology. It owns the characteristics of high expression level, short cultivation period, strong anti-pollution ability as well as relatively low cost. Most of FineTest® recombinant proteins are expressed by E.Coli.

Catalog No.	Product Name	Host
P0010	Recombinant Human PCT	E.Coli
P0022	Recombinant Human copeptin	E.Coli
P0055	Recombinant Human Asprosin	E.Coli
P0067	Recombinant Human $\beta$ -Actin	E.Coli
P0068	Recombinant Human Lamin A/C	E.Coli
P0108	Recombinant Human HSPA5	E.Coli
P0113	Recombinant EGFP protein	E.Coli
P0116	Recombinant Human GAPDH	E.Coli
P0117	Recombinant Human Yy1	E.Coli
P0119	Recombinant Human trx-1	E.Coli
P0120	Recombinant Mouse txn	E.Coli
P0122	Recombinant Human FABP2	E.Coli
P0124	Recombinant Human FABP4	E.Coli
P0125	Recombinant Human FABP5	E.Coli
P0126	Recombinant Human FABP6	E.Coli
P0127	Recombinant Human FABP7	E.Coli
P0128	Recombinant Human FABP8	E.Coli
P0129	Recombinant Human FABP9	E.Coli
P0130	Recombinant Mouse FABP4	E.Coli
P0132	Recombinant Human CYGB	E.Coli
P0135	Recombinant Human Casp3	E.Coli
P0136	Recombinant Bovine Uter	E.Coli
P0137	Recombinant Human Uter	E.Coli
P0138	Recombinant Hamster Uter	E.Coli
P0139	Recombinant Mouse Uter	E.Coli
P0140	Recombinant Rat Uter	E.Coli
P0141	Recombinant Bovine PAI-1	E.Coli
P0142	Recombinant Human PAI-1	E.Coli
P0143	Recombinant Mouse PAI-1	E.Coli
P0144	Recombinant Pig PAI-1	E.Coli
P0145	Recombinant Rat PAI-1	E.Coli
P0146	Recombinant Bovine IFNG	E.Coli
P0147	Recombinant Chicken IFNG	E.Coli
P0148	Recombinant Dog IFNG	E.Coli
P0149	Recombinant Human IFNG	E.Coli
P0150	Recombinant Mouse IFNG	E.Coli
P0151	Recombinant Pig IFNG	E.Coli

Catalog No.	Product Name	Host
P0152	Recombinant Rat IFNG	E.Coli
P0153	Recombinant Bovine TNFA	E.Coli
P0154	Recombinant Dog TNFA	E.Coli
P0155	Recombinant Guinea Pig TNFA	E.Coli
P0157	Recombinant Mouse TNFA	E.Coli
P0158	Recombinant Pig TNFA	E.Coli
P0159	Recombinant Guinea Pig CCL2	E.Coli
P0160	Recombinant Human CCL2	E.Coli
P0161	Recombinant Mouse CCL2	E.Coli
P0162	Recombinant Mouse CCL7	E.Coli
P0163	Recombinant Rat CXCL2	E.Coli
P0164	Recombinant Human CXCL9	E.Coli
P0165	Recombinant Human CCL11	E.Coli

## HEK293 Cell Expressed Proteins

Besides E.Coli expression system, FineTest® also developed HEK293 cell eukaryotic expression system, which can make expressed proteins more naturally active.



We conduct the ELISA validation comparison between P2750 Fine Test recombinant CD147 and 972-EMN R&D recombinant -CD147. The results show Fine Test eukaryotic proteins achieve the leading industrial level.

Catalog No.	Product Name	Host
P2351	Recombinant Mouse Timp-2	HEK293 cells
P2407	Recombinant Human TIMP-1	HEK293 cells
P2536	Recombinant Rabbit TIMP1	HEK293 cells
P2537	Recombinant Human Timp-2	HEK293 cells
P2707	Recombinant Human MMP-9	HEK293 cells
P2750	Recombinant Human EMMPRIN	HEK293 cells
P2751	Recombinant Human CRP	HEK293 cells
P2836	Recombinant Human IgE	HEK293 cells
P2871	Recombinant Human IgE	HEK293 cells
P2939	Recombinant Human KLK2	HEK293 cells

Catalog No.	Product Name	Host
P2940	Recombinant Human TGFB1	HEK293 cells
P2955	Recombinant Human ACE2	HEK293 cells
P3006	Recombinant SARS-CoV-2 Spike Glycoprotein RBD	HEK293 cells
P3018	Recombinant SARS-CoV-2 Spike Glycoprotein	HEK293 cells
P3237	Recombinant Monkey IgE-234	HEK293 cells
P3254	Recombinant Human Serpina12	HEK293 cells
P3302	Recombinant S1 Subunit[Omicron B.1.1.529]	HEK293 cells
P3313	Recombinant Mouse CFD	HEK293 cells
P3338	Recombinant Mouse IL-31R	HEK293 cells
P3343	Recombinant Mouse Haptoglobin	HEK293 cells
P3354	Recombinant Human GLA	HEK293 cells
P3359	Recombinant Human LECT2	HEK293 cells
P3362	Recombinant Human AHR	HEK293 cells
P3369	Recombinant Human Klotho	HEK293 cells
P3393	Recombinant Human PTX4	HEK293 cells
P3397	Recombinant Rat GPIHBP1	HEK293 cells
P8059	Recombinant Human ACE	HEK293 cells
P8062	Recombinant Human Lumican	HEK293 cells
P8100	Recombinant Human MMP-1	HEK293 cells
P8132	Recombinant Human CEA	HEK293 cells
P8133	Recombinant Human VEGF165	HEK293 cells
P8174	Recombinant Human EPO	HEK293 cells
P8194	Recombinant Rat.Mouse Lumican	HEK293 cells
P8240	Recombinant Human IGFBP-3	HEK293 cells
P8265	Recombinant Human MPO	HEK293 cells
P8266	Recombinant Human LGALS3	HEK293 cells

## Custom Recombinant Protein

FineTest® can produce any custom protein according to customers' requirements. Only protein name, Uniprot ID and applications are required.



Service Items	Service Checklist	Service Timeline
Gene Synthesis	Construction of Expression Plasmid	1-2 weeks
Protein Expression	Transformation Competent Cells	Within 1 week
Protein Purification	Column Chromatography Purification or Refolding	1 week
Project Delivery	Refolding, Lyophilized Protein, SDS-PAGE Result	2-3 weeks

## Reagents

FineTest® reagents cover wide applications in the fields of biology, biochemistry, and lab test including protein gel staining, IHC kits and assay kits.

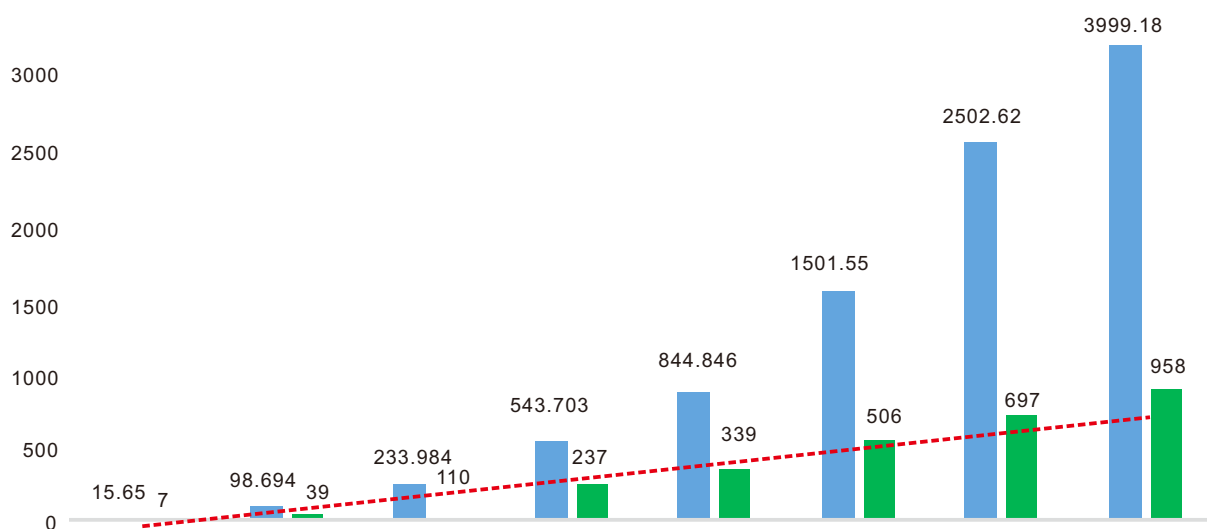
- IHC Kits
- Assay Kits
- Protein gel fast staining solution
- Other Reagents



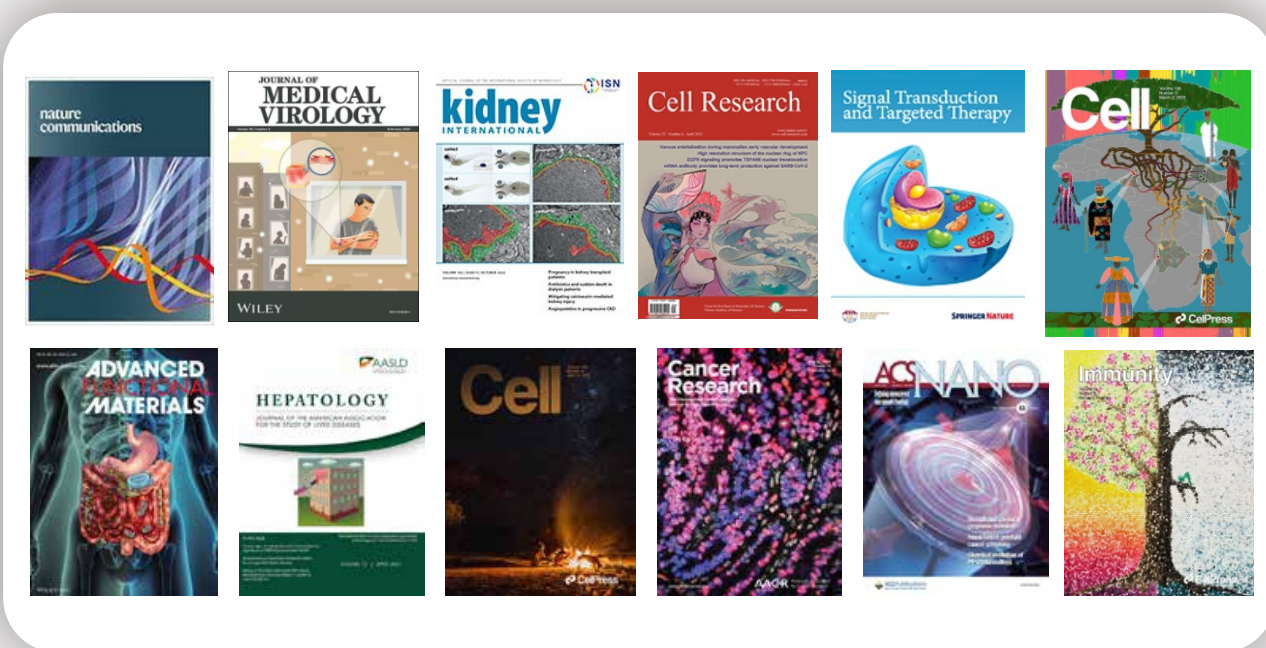
Catalog No.	Product Name
K001	BCA Protein Assay Kit
K025	Total Antioxidant Capacity Assay Kit (FRAP)
IHC0005	DAB Substrate Kit
IHC0007	rabbit-DAB(Poly-HRP)Detection IHC Kit
IHC0008	mouse-DAB(Poly-HRP)Detection IHC Kit
IHC0009	IHC Detection Kit
K018	Annexin V-EGFP Apoptosis Kit
K019	Annexin V-FITC Apoptosis Kit
K002	Bradford Protein Assay Kit
K003	Plasmid Extraction Kit
K004	Quick PCR Purification and Gel Extraction Kit
K017	MTT-Cell Based Proliferation/Toxicity Assay Kit
K026	Enhanced ECL Western Blotting Substrate Kit
K027	ATP detection Kit
K050	ROS(Reactive oxygen species) detection kit
K051	Total Nitric Oxide Assay Kit
K052	Hypersensitive ELISA Luminous substrate
K053	Trichrome Stain Kit
K054	Nitric Oxide Assay Kit

# Citations

Since 2016, FineTest® products have been cited in over 2,800 scholar articles from universities, research institutions and pharmaceutical platforms. There is an annual increase of 800+ newly cited papers including some leading journals like Cell, Cell Research, Annals Of The Rheumatic Diseases, Materials Today, Immunity etc. The high-quality products and professional services are widely accepted by global customers.



	2016	2017	2018	2019	2020	2021	2022	2023
Total IF	15.65	98.694	233.984	543.703	844.846	1501.55	2502.62	3999.18
Cited Papers	7	39	110	237	339	506	697	958



## High IF Citations

Catalog No.	Article Title	Journal Title	IF
EH4343 EM1360	SCUBE2 mediates bone metastasis of luminal breast cancer by modulating immune-suppressive osteoblastic niches	Cell Research	46.351
EH4233	Acetylation Blocks cGAS Activity and Inhibits Self-DNA-Induced Autoimmunity	Cell	31.398
EH4514	High Throughput Screening of Surface Engineered Cyanine Nanodots for Active Transport of Therapeutic Antibody into Solid Tumor	Advanced Materials	29.4
EH3723	The Poential Role of The T2 Family of Extracellular Ribonuclecs (RNASET2) as Circulating Biomarker in Rheumatoid Arthritis	Annals of the Rheumatic Diseases	28.003
EU2554	Gut microbiota drives macrophage-dependent self-renewal of intestinal stem cells via niche enteric serotonergic neurons	Cell Research	25.924
EM0183	Biomimetic multifunctional nanodrugs enable regulating abnormal tumor metabolism and amplifying PDT-induced immunotherapy for synergistically enhanced tumor ablation	Materials Today	24.2
P1226	A metabolite from commensal Candida albicans enhances the bactericidal activity of macrophages and protects against sepsis	Cellular & Molecular Immunity	24.1
EM0717	Directional mast cell degranulation of tumor necrosis factor into blood vessels primes neutrophil extravasation	Immunology	22.553
EH0370-HS	ENO2-derived phosphoenolpyruvate functions as an endogenous inhibitor of HDAC1 and confers resistance to antiangiogenic therapy	Nature Metabolism	20.8
EH1062	Elevated serum PAR-1 levels as an emerging biomarker of inflammation to predict the dengue infection severity	Journal of Medical Virology	20.693
FNSA-0100	Immunogenicity of novel DNA vaccines encoding receptor-binding domain (RBD) dimer-Fc fusing antigens derived from different SARS-CoV-2 variants of concern	Journal of Medical Virology	20.693
EM0382	E-prostanoid 3 receptor deficiency on myeloid cells protects against ischemic acute kidney injury via breaking the auto-amplification loop of necroinflammation	Kidney International	18.998
EH14546	FUS-mediated HypEVs: Neuroprotective effects against ischemic stroke	Bioactive Materials	18.9
EM1252	Microfluidic intestinal organoid-on-a-chip uncovers therapeutic targets by recapitulating oxygen dynamics of intestinal IR injury	Bioactive Materials	18.9
FNab10600	Robust Covalent Aptamer Strategy Enables Sensitive Detection and Enhanced Inhibition of SARS-CoV-2 Proteins	ACS Central Science	18.2
FNSA-0070	Inhibition of cystathionine $\beta$ -synthase promotes apoptosis and reduces cell proliferation in chronic myeloid leukemia	Signal Transduction and Targeted Therapy	18.187
EM0882	Chemotherapy-induced complement signaling modulates immunosuppression and metastatic relapse in breast cancer	Nature Communications	17.694
EU0403	Adipose-targeted triiodothyronine therapy counteracts obesity-related metabolic complications and atherosclerosis with negligible side effects	Nature Communications	17.694
FNSA-0106	Single-cell transcriptome and translome dual-omics reveals potential mechanisms of human oocyte maturation	Nature Communications	17.694
	A neutrophil mimicking metal-porphyrin-based nanodevice loaded with porcine pancreatic elastase for cancer therapy	Nature Communications	17.694

Catalog No.	Article Title	Journal Title	IF
EM0382	Microbial synthesis of Prussian blue for potentiating checkpoint blockade immunotherapy	Nature Communications	17.694
EM1688 EM1392 EH4763	Macrophage lineage cells-derived migrasomes activate complement-dependent blood-brain barrier damage in cerebral amyloid angiopathy mouse model	Nature Communications	17.694
EU2607	A polycistronic system for multiplexed and precalibrated expression of multigene pathways in fungi	Nature Communications	17.694
EM0183 EM0109	Ligustrazine Nanoparticle Hitchhiking on Neutrophils for Enhanced Therapy of Cerebral Ischemia-Reperfusion Injury	Advanced Science	17.521
ER0255 ER0748 EU3134	Macrophage-hitchhiking interleukin-10 plasmid DNA delivery system modulates rheumatoid arthritis microenvironment via the re-polarization of macrophages	Nano Today	17.4
FNab06354	Integrated proteogenomic characterization of urothelial carcinoma of the bladder	Journal of Hematology & Oncology	17.388
EH2627 EH2583	Renin-Angiotensin System and Sex Differences in COVID-19: A Critical Assessment	Circulation Research	17.367
ER1510	Sophisticated Magneto-Mechanical Actuation Promotes In Situ Stem Cell Assembly and Chondrogenesis for Treating Osteoarthritis	ACS Nano	17.1
EM0828	Fusogenic Coiled-Coil Peptides Enhance Lipid Nanoparticle-Mediated mRNA Delivery upon Intramyocardial Administration	ACS Nano	17.1
EH2484	Tumor Microenvironment-Activatable Nanoenzymes for Mechanical Remodeling of Extracellular Matrix and Enhanced Tumor Chemotherapy	Advanced Functional Materials	16.836
EM6911	The liver microenvironment orchestrates FGL1-mediated immune escape and progression of metastatic colorectal cancer	Nature Communications	16.6
EM0465	Mesenchymal stromal cells alleviate depressive and anxiety-like behaviors via a lung vagal-to-brain axis in male mice	Nature Communications	16.6
ER0728 ER0848	Ultra-durable cell-free bioactive hydrogel with fast shape memory and on-demand drug release for cartilage regeneration	Nature Communications	16.6
EH2259	Nano-scarifiers for blood biomarker discovery in ovarian carcinoma	Nanotoday	16.582
EH0185 EM1592	Vitamin D3 and carbamazepine protect against Clostridioides difficile infection in mice by restoring macrophage lysosome acidification	Autophagy	16.016
EH12769 EH9771 EH12072	Bone Marrow Mesenchymal Stem Cell-Derived Dermcidin-Containing Migrasomes enhance LC3-Associated Phagocytosis of Pulmonary Macrophages and Protect against Post-Stroke Pneumonia	Molecular Psychiatry	15.992
EH4397	Intestinal dysbiosis exacerbates susceptibility to the anti-NMDA receptor encephalitis-like phenotype by changing blood brain barrier permeability and immune homeostasis	Nature Communications	15.805
EH4251	MCC950 reduces autophagy and improves cognitive function by inhibiting NLRP3-dependent neuroinflammation in a rat model of Alzheimer's disease	Advanced Science	15.1
EM2087	Abnormal levels of mitochondrial proteins in plasma neuronal extracellular vesicles in major depressive disorder	Brain, Behavior, and Immunity	15.1
ER1094 ER0036	Age-dependent pathogenic characteristics of SARS-CoV-2 infection in ferrets	Brain, Behavior, and Immunity	15.1
FNSA-0106	Multi-Omics Analysis Reveals Translational Landscapes and Regulations in Mouse and Human Oocyte Aging	Advanced Science	15.1



8000<sup>+</sup>  
ELISA KITS

12000<sup>+</sup>  
ANTIBODIES

5000<sup>+</sup>  
PROTEINS

2800<sup>+</sup>  
CITED PAPERS

## Wuhan Fine Biotech Co., Ltd

☎ +86-027-87384275

☎ +86-027-87800889

✉ fine@fn-test.com

🌐 www.fn-test.com

📍 1-2 Floor, BLD 22, Optics Valley Biopharmaceutical Accelerator, No.388 Gaoxin 2nd Road, East Lake High Tech Development Zone, Wuhan, 430074, Hubei, China